

@2016, Maharashtra University of Health Sciences, Nashik.

Published by : The Registrar, Maharashtra University of Health Sciences, Nashik - 422004.

Printed by : www.wikasprinting.com | 0253 - 2351010

MAHARASHTRA UNIVERSITY OF HEALTH SCIENCES,
NASHIK



Sr. No. _____

महाराष्ट्र आरोग्य विज्ञान विद्यापीठ, नाशिक
MAHARASHTRA UNIVERSITY OF HEALTH SCIENCES,
NASHIK

**PERSPECTIVE PLAN
FOR HEALTH SCIENCES EDUCATION
2017 - 2022**

Price Rs. 300/-



॥ श्री धन्वंतरये नमः ॥



Hon'ble. Shri. Chennamaneni Vidyasagar Rao

Chancellor, MUHS, Nashik & Governor, Maharashtra State



FOREWORD

Health is the focal point of Maharashtra Government. Creation of skilled and well trained healthcare manpower is the key to resolve the health issues of the large population of the State.

Health education is therefore burdened with noble responsibility to educate well and wisely to students. Therefore to safeguard dilution of standards, the criteria for imparting Health Sciences Education should be stricter.

The Vice Chancellor, Prof Dr. Deelip Mhaisekar and Planning Board took immense efforts to set the new direction of Medical Education for the next five years. In this Perspective Plan, the MUHS has emphasized on the quality of Health Sciences Education & overall development of the students.

A range of references are proposed to improve the entire scenario of Medical Education. The main focus is to create society committed and skilled healthcare professionals. They will be given opportunities to develop their communication skill and leadership abilities. Planning to develop Health Communication Sector is one of the important concepts included in this plan. The other important key factor emphasized is 'Research'. Immediately after taking charge, I declared MUHS Post Graduate Medical College at Nashik. It will be one of the unique model PG Institute in the State and I also propose that within next 5 years imbalance of Medical Education will be taken care.

I wholeheartedly congratulate Vice Chancellor and all Authorities of Maharashtra University of Health Sciences for preparing the new Perspective Plan. With the help of this Perspective Plan, I am confident that all unserved and under utilized part of the State will get Medical Colleges so that maximum aspirant and deserving students can enter into medical education to serve the poor in an affordable way.

(Shri. Girish Mahajan)

Minister of Medical Education &
Pro-Chancellor M.U.H.S., Nashik



FOREWORD

It gives me immense pleasure and great satisfaction to present the Fifth Perspective Plan of the Maharashtra University of Health Sciences (MUHS) for the period 2017-18 to 2021-22. After taking over the charge as Vice Chancellor of this University, I have successfully accomplished the task of presenting this Perspective Plan, with the active support of Planning Board Department, as well as valuable suggestions received from various dignitaries, such as MPs, MLAs, MLCs and members of various authorities of the University and former Minister of Medical Education & Pro-Chancellor of this University Hon'ble Shri. Vinodji Tawade.

Let me also acknowledge the valuable guidance of Hon'ble Minister of Medical Education & Pro-Chancellor of this University Shri. Girishji Mahajan; Hon'ble Additional Chief Secretary, Medical Education & Drugs Department, Smt. Medha Gadgil, I.A.S. and Hon'ble Director, Directorate, Medical Education & Research, Dr. P. H. Shingare, without which I would find it extremely difficult to present this plan.

This University was established in the year 1998. The very concept of establishing MUHS was to observe / promote a uniform administrative policy and impart equal quality medical education of all pathies to all, at par with international standards using modern methods and gadgets.

We have had in our mind that we must consider Social, Cultural, Economic and Geographical aspects of the State, while positioning an Institute of medical education. We need to have a health education which addresses health problems apparent in different socio-economic classes.

It is necessary to make a Perspective Plan of the University so as to provide adequate learning opportunities to all sectors of the society in the State.

The State needs more Medical Colleges which can be started in accordance with the Perspective Plan of the University. In order to promote undeveloped areas, proposals from those districts where no health science college is in existence will be recommended to the Government as per this Perspective Plan. The proposals of any pathy college from the districts where the proposed 'pathy college' is not in existence will also be recommended to the Government. Establishment of health sciences institutes will be promoted by granting concession in new college opening fee in Tribal areas notified by Government of Maharashtra.

However, considering quality of infrastructure and availability of experienced teaching faculty, for cities having Municipal Corporations, one college for every five lakhs population will be recommended. Moreover, Municipal Corporation Hospitals have infrastructure which can also be utilized, to promote to open new Health Science College. Therefore the University has decided to grant concession in new college opening fee to Municipal Corporations as well.

Medical seats per 1000 population in Maharashtra is less as compared to the other States. It is therefore amply evident that the State is in need of more doctors and therefore we must have more medical colleges especially for districts and sub-districts in tribal areas, so that the meritorious poor students can aspire to get seats in such colleges. Accordingly the hospitals of the colleges can fulfill the need of medical services of under developed & under privileged society of that region.

There is also a need for increase in number of PG seats as even now there is an acute shortage of specialist and super specialist doctors in the State. The present Perspective Plan encourages increase of Post Graduate & super speciality seats. In this direction, we are looking forward to start Post Graduate Institute in collaboration with District Civil Hospital, Nashik, Super Speciality Hospital, Nashik by making use of these Government hospital beds for teaching purpose. By doing so non teaching beds will be utilized for teaching and at the same time we are getting graduate students to render medical services to the down trodden and under privileged section of our society.

From the academic year 2010-11 Maharashtra Govt. has permitted to start the Bachelor of Paramedical Technology (BPMT) course in 13 subjects in the University affiliated Medical Colleges, which will help as supportive service in the Medical field. This will prove to be an additional feather in the cap of the University as this professionally trained paramedical staff can streamline the growth of medical services in the State of Maharashtra. Skilled persons will be available in medical field to cater paramedical services in hospitals thereby reducing the hardship of the patients and giving space to the specialist doctors to attend maximum number of patients.

Yoga is a part of Indian Philosophy. Currently Holistic approach of Yogic wisdom has been accepted as a Scientific Health Science at national & international platform. Management of Non Communicable Diseases with modern medicine has many limitations. Yoga Therapy has been scientifically proven its safety, efficacy, affordability and accessibility in these Non Communicable Diseases. Training human resources through uniform & standard courses is need of hour. So the University has proposed Advanced Yogic Science Courses through Public Private Partnership (PPP) in collaboration with esteemed institutes in Maharashtra State. The fully trained professionals can set new benchmark in healthcare in State of Maharashtra.

I am sure that this Perspective Plan will give a wider horizon and greater perspective to the aspirations of students, teachers and managements and the day is not far away when MUHS will shape its position not only on the map of India but that of the world for its academic excellence. It is our desire to have maximum transparency in all the fields of health sciences education. From Academic Year 2016-17 MUHS has started online submission of Examination Forms. We are also taking up the online re-totalling & Verification of Marks and online submission of thesis of Postgraduate courses from next Academic Year.

We intent to achieve the University objectives by skillful utilization of available resources i.e. 5 M's i.e. Man (Human resources), Material (Infrastructure), Money (Provisioning of sufficient funds), Management (Co-ordination & Monitoring) & Marketing (Dissemination of knowledge & expertise). In view of the Government Policy, University has planned to have various Certificate / Fellowship Courses under skillful Department of Government of India. The University has already started MBA in Health Care Administration, a two years full time management course for the young medico graduates. This course will enhance the decision making capacity and imbibe the leadership qualities in budding doctors. On completion of this course they will be able to co-ordinate and motivate the staff for achieving the objectives of the institute where they render their services.

It is proven fact that optimum use of available resources and sustainable efforts from each and every one can derive better results.

I am confident that this Perspective Plan will cater for the needs of medical education and medical services of society as it clearly defines the policy of equitable distribution of medical colleges of all pathies along with its hospitals within the jurisdiction of the University.

On behalf of the Perspective Plan committee, I thank all the official members, representatives of the various authorities of the University, MPs, MLAs and MLCs for providing their valuable suggestions, guidance & co-operation for shaping this Perspective Plan. I am also thankful to MUHS staff for their wholehearted efforts in preparing the Perspective Plan.

Finally, we at this University firmly believe that, 'There is always ample scope for improvement in any given situation.' We are committed for improvement & we will always strive for it.



(Prof. Dr. Deelip G. Mhaisekar)

Vice Chancellor, M.U.H.S., Nashik

CONTENTS

Sr. No.	Particulars	Page No.
I	Introduction	1
II	Objective of Perspective Plan	4
III	Trends in Population growth	17
IV	Role of Medical Education in improving health of people	22
V	Analysis of quantitative and qualitative distribution of the Health Sciences Education Facilities	24
VI	Proposals	35
	(A) Starting of new colleges of Health Science Education	
	(B) Increase In Intake Capacity	
	(C) Upgradation of existing institutions	
	(D) Deficiency of Teachers	
VII	Post Graduate and Super specialty education in Health Sciences	39
VIII	Excellence and Quality in Medical Education	50
LIST OF ANNEXURES		
Annexure	Particulars	Page No.
1	Ranking of districts by population size	52
2	Region wise Percentage population	53
3	Municipal Corporation Population	53
4	Region wise Population density per Sq. Km.	54
LIST OF TABLES		
Sr. No.	Particulars	Page No.
1	District wise Affiliated College List (Medical)	55
2	District wise Affiliated College List (Dental)	56
3	District wise Affiliated College List (Ayurved)	57
4	District wise Affiliated College List (Unani)	59
5	District wise Affiliated College List (Homoeopathy)	59
6	District wise Affiliated College List (Nursing)	61
7	District wise Affiliated College List (Physiotherapy)	66
8	District wise Affiliated College List (Occupational Therapy)	67
9	District wise Affiliated College List (BASLP)	67
10	District wise Affiliated College List (BPO)	67
11	List of Number of Health Sciences colleges in the various states of India	68

I) INTRODUCTION :

The Maharashtra University of Health Sciences (MUHS) is guided by a strategic agenda providing right direction to the health science education in the state. Its consistency of purpose, its goal and mission will no doubt help health science education and thus health & education services to reach a high level of elevation.

“The future belongs to those who believe in the beauty of their dreams”. It was with this dream that the Maharashtra University of Health Sciences was established on 10th June 1998 by MUHS Act No.X of 1998. MCSR is applicable to the University vide State Government resolution No. MAV-1005/102/CR-45/05/Edu-1, Dt. 17/01/2014.








Under Section 64 (1) of MUHS Act, it is the duty of the University to prepare a Perspective Plan for educational development for the location of institutions of higher learning in a manner ensuring equitable distribution of facilities of health sciences education having due regard in particular to the needs of un-served and underdeveloped areas in the state. Such a plan is to be prepared by the Academic Council to be placed before the Senate through the Management Council.

The MUHS is a teaching and affiliating University and has the following objectives -

- To carry out its responsibility of creation, preservation and dissemination of knowledge:
- To promote discipline and the spirit of intellectual inquiry and to dedicate itself as a fearless academic community to the sustained pursuit of excellence:
- To encourage individuality and diversity within a climate of tolerance and mutual

AFFILIATED COLLEGES OF MUHS, NASHIK

As On Date : 30/06/2016

		Medical No. of Affiliated colleges	38
		Dental No. of Affiliated colleges	29
		Ayurved No. of Affiliated colleges	63
		Unani No. of Affiliated colleges	06
		Homoeopathy No. of Affiliated colleges	46
		Allied Health Science No. of Affiliated colleges	144



understanding:

- (d) To promote freedom, secularism, equality and social justice as enshrined in the Constitution of India and to be catalyst in socioeconomic transformation by promoting basic attitudes and values of essence to national development:
- (e) To extend the benefits of knowledge and skills for development of individuals and society by associating the University closely with local and regional problems:
- (f) To carry out social responsibility as an informed and objective critic, to identify and cultivate talent, to train the right kind of leadership in all walks of life and to help younger generation to develop right attitudes, interests and values:
- (g) To promote equitable distribution of facilities of health sciences education:
- (h) To provide for efficient and responsive administration, scientific management and develop organization of teaching and research:
- (i) To promote acquisition of knowledge in rapidly developing and changing society and to continually offer opportunities of upgrading knowledge, training and skills in the context of innovations, research and discovery in all fields of human endeavor by developing educational network related to health sciences with use of modern communication media and technologies appropriate for a learning society:
- (j) To strive to promote competitive merit and excellence as the sole guiding criterion in all academic and other matters relating to students:
- (k) To impart education and training to achieve the goal of physical, mental and spiritual health of every individual:
- (l) To create better understanding between different systems of medicines through interdisciplinary study and research:
- (m) To establish and develop Indian Systems of Medicine so as to keep health of a healthy individual and to cure the disease of diseased individual:

This plan is prepared by the MUHS with the aforesaid view in mind with reference to the changing scenario of medical education as under -

In good old times, education was considered as charity or philanthropy. Gradually it became an occupation. Some judicial dicta hold it as an “industry”. As of now, imparting

education and particularly medical professional education has come to be a means of livelihood for some professionals and a mission in life for some altruists. This change of outlook gave rise to private medical colleges on the one hand and globalization on the other, that has entered in the field.

The plan was prepared keeping in view the possibility of International Universities setting up educational institutes in the state and vice versa (WTO & GATT agreement). At the same time various court judgments viz: W.P. No. 607/1992 Unni Krishnan, J.P. & Ors. Vrs. State of Andhra Pradesh & Ors. (04-02-1993), W.P. No. 1170/1998 Dhananjay R. Kulkarni & Ors. Vrs. State of Maharashtra, (1999), W.P. (Civil) No. 317/1993 T.M.A Pai Foundation & Ors. Vrs. State of Karnataka & Ors. (31-10-2002), Civil Appeal No. 6167/2001 State of Maharashtra Vrs. Indian Medical Association & Ors.(06-12-2001), W.P. (Civil) No. 350/1993 Islamic Academy of Education & Ors. Vrs. State of Karnataka & Ors. (14-08-2003), Case No. appeal (Civil) 5041/2005 P.A. Inamdar & Ors. Vrs. State of Maharashtra & Ors. (12-08-2005), which have discussed the role of the University and Government in assessing the need to establish medical or health sciences colleges, role in respect of minority, unaided colleges etc. As per the order given by the Hon'ble Supreme Court of India in Writ Petition (Civil) No. 350/1993, delivered on 14-08-2003, "The State Govt. alone would be in a position to determine local needs which may be based, for instance, in the case of doctors, on the ratio of doctors to the population of the state." The need is also assessed by various social geographic and economic factors.

[Some Supreme Court Judgments have expressed that minority unaided colleges do not come under the purview of Perspective Plan.]

The scope of the plan is not just limited to the governing provision of MUHS Act but also to actualise the mandate incorporated under Article 371(2) of the constitution of India.



II) OBJECTIVES OF PERSPECTIVE PLAN :



The objectives of the University in preparing a Perspective Plan for Health Science Education in the State, are in consonance with the realisation of the objectives of the University as laid down in the Act. After a review of appraisal of objectives achieved currently, the University proposes a plan for their implementation for the year 2017-18 to 2021-22.

The University will strive to achieve the status of Global University; a place at least amongst top hundred Universities in the world and recognition as number one at the National level amongst all Health Sciences Universities in India. Our aim will be to provide high quality research oriented education and holistic health care as well as to encourage the academic learning environment. Medical education in all sectors should be improved so that trained doctors of this University can provide better patient care to society so as to improve the quality of life of common man.

The Perspective Plan is prepared after an extensive interaction with the members of the respective Regional Development Boards, representatives of various NGO, Deans of the respective regional Colleges of Health Sciences, prominent social workers, distinguished academicians, authorities of the University, members of the Parliament and members of the Legislative Assembly and Council, and authorities of Directorate of Medical Education & Research, Director General of Health Sciences, Director of Ayurveda, Department of Medical Education & Drugs and Department of Public Health, Govt. of Maharashtra.

A) Feathers in Cap of the University

1) Representation of professional bodies on the University authorities :

We need to devise a system by which experts from the professional bodies become members of the BOS or any other governing body of the University. The views of these experts can be incorporated while making policies of Medical Education so that its scope widens.

2) Establishment of Chair :

To disseminate, create and preserve knowledge and understanding by teaching, research, extension and service and by effective demonstration and influence of its corporate life on society and to co-operate or collaborate with any other University, Institution, Authority or Organisation for research and advisory services and for such purposes to enter into appropriate arrangement with other University, Institution, Authority or Organisations to conduct certain courses as the situation may demand.

To achieve the above mentioned objectives of the University, the University in collaboration with Vd. Sane's Ayurvedic Education and Agricultural Research Trust, Thane, established a chair named "Madhavbaug Institute of Preventive Cardiology" at MUHS, Regional Centre Mumbai.

3) Conducted / Constituent Colleges of the University :

Health Care Management or Hospital Management is also an important aspect Hence to cater the rising need of health care managers in health tourism sector, corporate hospitals etc., **School of Health Care Administration** is established in collaboration with two private enterprises at Ashoka Institute of Health Care, Nashik & ARMIET, BIZ School, Thane. This School's are running two years Master degree programme i.e. M.B.A. in Health Care Administration. Apart from these two Conducted Colleges, the MBA in Health Care Administration Course is conducted by the University at its Regional Centre in Pune.

4) Paramedical Courses :



The present scenario in medical colleges and hospitals shows that, there is a dire need of skilled manpower of technicians. All medical colleges and hospitals are well equipped with world class equipments. For best utilization of medical equipments, skilled paramedical

man power is required to handle it. For this purpose DMLT (after B.Sc.) course is already affiliated in various colleges / institutes, however it fulfills needs of the health sector to a very small extent.

To make up for the shortage of paramedical manpower, the University has started Bachelor of Para Medical Technology (BPMT) course in various specialties in affiliated medical colleges. The courses related to dental faculty like dental hygienist, dental technicians will also be undertaken. In addition the courses related to other pathies of similar nature like Nursing in Ayurveda, Panchkarma Assistant, etc. are in pipeline.

5) Interpathy Courses :

The plan proposes a mechanism to bring about interpathy interaction and promote original research in the Indian and other systems of medicine. Upgradation of colleges, teaching Indian Systems of Medicine and providing good quality of training to such doctors by motivating interdisciplinary interactions between various pathies.

To improve interdisciplinary interactions between Medical & Pharmacy faculties, University is successfully conducting M.Sc. Course in Pharmaceutical Medicine at Nashik Campus. Also for starting additional courses like M.Sc. in Ayurvedic Botany, M.Sc. in Radiation Physics, BSc (optometry) process will be initiated.

6) Faculty Development :



University will take initiative in organizing refresher courses for Medical Teachers especially in Medical Education Technology and separate cells can be started on regular basis by organizing interdisciplinary seminars on subjects of recent importance for faculty.

Department of Medical Education Technology at Regional Center Pune was established in the year 2007, which provides a highly conducive academic environment and interaction with industry based professionals for faculty development.

Medical Council of India has already recognized MET Center. In addition, online courses can be made available for increasing faculty being trained in education technology. The University shall devise guidelines for refresher training courses which can be run on credit point basis. It is proposed to make such courses mandatory for the newly appointed medical teachers to undergo basic training course in medical education technology of three days within first four months. Approval to the Appointment in service will not be given unless the basic course is completed.

7) Continuing Medical Education (CME) :



A programme in Continuing Medical Education (CME) is already introduced. Continuing Medical Education designates the period of education and training of doctors commencing after completion of basic medical education and postgraduate training; thereby extending throughout each doctor's professional working life. For this purpose, a new department of continuing Medical Education needs to be established. On line courses can be started

for medical practitioners for their continuing upgradation of professional knowledge.

8) Masters of Health Professions Education (MHPE) :

The Master of Health Professions Education (MHPE) Course enables health professions faculty to gain deeper insights into student learning process and develop advanced levels of competence for their roles as educators, educational leaders, researchers and scholars in health professions education. This competency-based programme, builds the education related competencies of health professional faculty integrating all required skills, knowledge and attitude. The fundamental premise of this in service programme is workplace learning because much of the knowledge, skills and attitudes relevant to Masters level training are based in the work that health professions faculty perform every day as they educate their learners in clinical, hospital and classroom settings. The course builds the theory and impart



advanced skills to support the practice.

The MHPE scaffolds workplace learning to move towards competence in educational domains i.e. curriculum, teaching, learning, assessment, leadership, research and quality assurance.

The completion of the MHPE requires demonstrating competency in critical educational outcomes. The semester based programme uses a credit system of grading and assessment.

The curriculum is need based and is taught by a pool of expert resource faculty with advanced knowledge and experience in health professions education, on campus as well as workplace, supported by mentoring, peer learning and abundant library and resources.

9) Doctor of Philosophy (Ph.D.) :

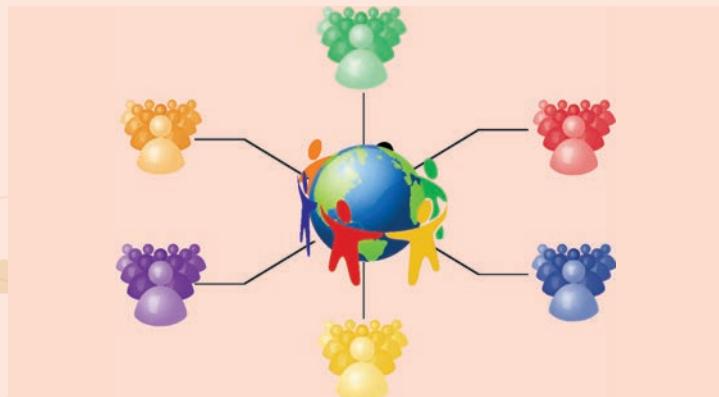


To develop research activities more efforts are to be made for registration of candidates for Ph.D. The University has conducted Ph.D. entrance as per new UGC Guidelines.

As on today 74 Centers are recognized for Ph.D., 350 Ph.D. guides are registered and 575 Students are enrolled for Ph.D.

Post doctoral fellowships can also be initiated. In order to encourage industry sponsored research, modifications to Ph.D. regulations will be carried out.

10) University Regional Centers :



Seeing the convenience of students, teachers, parents and society at large, the University has established Five Regional Centers at Mumbai, Pune, Aurangabad, Nagpur and Kolhapur and is now planning to strengthen them.

Some innovative courses are being conducted by some of the regional centers. It is proposed to establish new departments to conduct research activities at regional centers. The University has purchased land in Airoli, Navi Mumbai to undertake various programmes of faculty development, research activities and need based courses.

11) MOU with University of Nairobi (UON) :

It is agreed between MUHS, UON and MERCK to establish a Strategic collaboration in order to conduct a “Fellowship course in Medical Oncology” of the MUHS for doctors from Africa, in order to increase the limited number of medical oncologists and hence improve access to cancer care in Africa; There by enhancing cooperation and collaboration between MUHS, UON and MERCK. To give firm standing to the ideology, Memorandum of Understanding has been signed on 23rd March 2015.

MUHS is in-charge and responsible to give, develop and conduct the Fellowship course in Medical Oncology in its recognized Institutes / affiliated medical Colleges for the period of two terms (each term is of 6 months).

The UON will be responsible for the other two terms (each term is of 6 months), which will held to practice what has been learnt at the recognized Institutes / affiliated medical Colleges.

For conducting various Health sciences courses University is trying to have MOU with foreign Instiutes.

12) University Employment Cell :

There are so many Primary Health Centers where no doctors are available. Ironically, there are doctors, graduate doctors as well as post graduate doctors who require job placement. There are also research institutes where job placement is required, fellowship are available in our country and in foreign countries. To fill up this gap of information regarding employment opportunities and availability of candidates is necessary. Hence, there is need of creation of a unique employment cell of health science professionals.

For this purpose the University has already established employment cell in 2006 to reach the updated information for the mutual benefit of the prospective employee and



employer. Information regarding qualification of the candidates is collected thorough the-registration of the candidates and same is provided to the colleges if demanded by-them. Many candidates have registered their names to this employment cell.

Efforts shall be made to strengthen this employment cell and widen its scope so that information of registered candidates can be made available on the University website.

B) Our Aspirations :

1) Establishing Health Sciences colleges in rural areas :

One major challenge faced by the State / Country is the shortage of trained human resources in health care. The number of new medical colleges should be opened in rural set up in different regions and preference should be given to students from these areas. So the plan proposes -

- Establishment of new institutions of health sciences on the basis of the need of districts of the region.
- Establishment of new institutions giving priority to undeveloped areas of respective district within a region.
- Preference to un-served and underserved population while establishment of institutions.
- Establishment of institutions run by the government, municipal corporation and semi-government organizations in respective areas so that the poor and the needy people can have regular access to the facility of treatment for common diseases so as to achieve equity in health science education facility and quality health care in the State.
- Concession in fees for opening colleges in tribal areas as notified by Government of Maharashtra.
- Concession in fees for opening colleges by the Municipal Corporation.
- Opening Under Graduate & Post Graduate colleges of Medical, Dental, Ayurved and Homoeopathy faculties by the University.
- The University proposes to devise short term courses in Disaster Management for training of manpower for handling disaster situations.

2) Public Private Partnership in Super Specialty :

Super specialty, Super Subspecialty, Fellowship & Certificate courses can be started in well equipped private hospitals on the basis of Public private partnership. Post Graduate seats are mostly available in cities like Mumbai, Pune, Nagpur, Aurangabad, that too in a very small number. However, expertise and faculty is also available in private sector. Because of monetary constraint it is difficult for public sector to maintain such expert man power. Hence, under the scheme of public private partnership, super specialty hospitals in private sector can be attached to a super specialty department of medical college, so that expertise and faculty would be shared and private sector faculty can contribute in super specialty education. Such model shall be evolved so that the number of super specialty seats can be increased and clinical material available in private super specialty hospitals will be fruitfully utilized.

3) Need Based Education (New Innovative Courses) :

Efforts shall be made to create new innovative courses like -

- a) MD in Infectious diseases
- b) MD in Emergency Medicine
- c) MD in Sports Medicine

4) Need Based Research :

The plan proposes to promote research and to include ethical guidelines for conducting



medical research in all the systems of medicine. To promote research in collaboration with technical institutes, industries and attempt will be made to promote patent acquisition.

India has a rich heritage in health care sciences from the times of Sushrut and Charaka. In the University, we can build a research center with modern technology

available for Ayurvedic Research to promote Inter-disciplinary and Inter-faculty research.

- Industry sponsored research as per the need of industry needs to be promoted.

- Separate Clinical Trial Department of the University needs to be established.
- Workshops for students and teachers on research methodology needs to be conducted.

5) Multi Centric Clinical Trial Department :



To encourage research activities huge amount of clinical material available in the affiliated medical colleges and can be utilized by involving colleges in conducting multi centric clinical trials for research & innovatives in given legal frame work. Such projects will need approval as per the rules & regulation of Government of India. The pharmaceutical companies, exclusively for

academic purpose, can take such type of opportunities and can give sponsorship to such clinical trials / research / innovatives.

6) Quality of Medical Education :

The plan proposes to take a review and to analyze the institutions on following criteria and accreditation of institutions considering the following -

- a) Curricular aspects
- b) Teaching-learning and evaluation
- c) Research consultancy and extension
- d) Infrastructure and learning resources
- e) Student support and progression
- f) Organization and management
- g) Healthy practices

Studies on the basis of the above criteria prove that, the accredited institutions are superior to other institutions in general; therefore one of the objectives of this University will be to encourage the institutions for getting accreditation by NAAC. The colleges having standing of 40 years should get accredited by NAAC within next two years, so that they can

set examples for newly established colleges.

The University wishes to conduct research in evaluation of the quality of medical education so that reasonably perfect model is evolved.

7) Communication Skills :

The incidents of unrest between doctors and patients have lately become common occurrences. The patient-doctor relationship can be enhanced through training of the prospective doctors in the basics of ethics, etiquettes as well as communication skills.

To improve communication skills of the students an attempt will be made to train the students on addressing social problems, affecting the population at large and mental health issues by revising curriculum. Efforts shall be made to strengthen University Department of Health Communication, which will start various courses programmes, workshops for students, Doctors, Various healthcare professional, journalist, media persons & public at large. For this, Collaboration efforts will be done with Governments skill enhance department. Various interdisciplinary research will be done by Department of Health Communication.

8) Collaboration with Traditional Universities :

To improve interdisciplinary interactions and research, collaborations with Traditional Universities needs to be made. The goal of this collaboration is to facilitate advancement of knowledge on the basis of reciprocity, best efforts, mutual benefits and frequent interactions. As a part of this, University has made Memorandum of Understandings with Mumbai, Pune, Aurangabad & Kolhapur Universities.

9) Foreign University Collaboration :



A Global University can be created by building upon the environment of teaching and research excellence existing in the University so that it becomes the sought after destination of students not only nationally but also internationally. Medical educators need

to be aware of their student's aspirations, so that they can be better prepared to meet the challenges. For this we need oriented education, oriented research, permanent database of students and faculty manpower, research in collaboration with technical institutes, patent acquisition & global partnerships.

With new act of foreign University, more and more Universities will come to India. We need to tap the sources in order to start to implement their partnership in evaluation process skill stations. MUHS can act as clinical skill teaching centers for foreign graduates, utilizing large number of clinical materials available. Training in psychomotor domain can be done for such Universities. We could have diagnostic centers for teaching in areas like tropical diseases and infectious diseases. Student exchange and faculty exchange can be promoted.

Constituent College / Institute means a College / Institute / University Department established by the University in co-operation or collaboration or on public private partnership basis with any other University, College, Institution, Authority, Organization or Company for conducting Health Sciences or Interdisciplinary courses. It may be within or outside the campus of the MUHS.

10) Satellite connectivity of the University :



Efforts shall be made for making all affiliated colleges and institutions be Part of National Mission on Education through information and Communication Technology project by Ministry of HRD, Govt. of India. NME-ICT plans to leverage the potential of ICT to provide high quality, personalized and interactive knowledge modules over the internet / intranet for all the learners in Higher Education

Institutions in an any time any where mode which will be helpful for the University and Colleges for Countrywide Virtual Classroom, Collaborative Research, Virtual Library, Sharing of

Computing Resources, Grid Computing, Network Technology Test-bed & e-Governance.

Effort shall be made for creating E-content and all faculty (Past and present) will be encouraged to record their deliberations, clinics and lectures on DVD. Each college will be encouraged to have on web cast worthy Lecture Hall and a video studio for recording lectures. Operation theatres and labs will be connected to the intranet networks.

11) Library :



The University will make efforts to provide e-library facilities so that, affiliated colleges can have access to many journals, at nominal price. The participation in accrediting procedure, research & continuing medical education for affiliated colleges may be one of the pre-condition for continuation of affiliation. It is planned to start separate Department of Medical

Education Technology in the University campus.

12) Grant of Autonomy for deserving institutions :

In the era of academic freedom, autonomy should be granted to reputed deserving affiliated colleges / departments to conduct academic programmes, examination and develop syllabus for the respective subjects and issue certificates of passing the examinations etc. Autonomous college, institution or a University department which has been granted autonomy shall have full academic, administrative and financial autonomy subject to the provisions of Act and Statutes.

13) Starting of University Health Science Colleges :

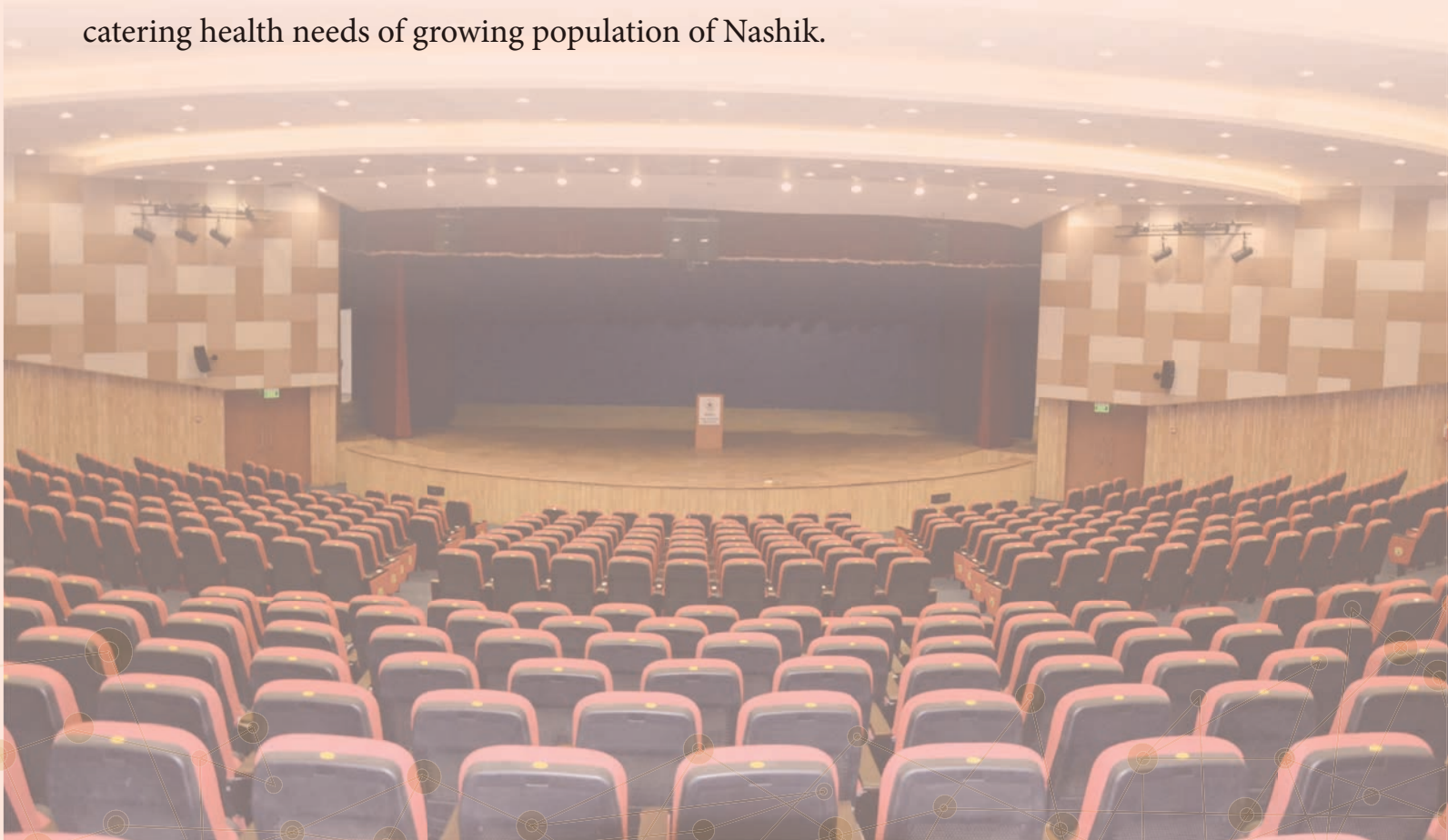
For fulfilling the dream of interpathy research the University intends to start its own colleges of Medical, Dental, Ayurved & Homoeopathy faculty. As the colleges grow, there will be an interpathy department of research which will do research on following broad lines :-



- 1) To increase the shelf life of medicine.
- 2) To reduce the side effects of the medicine.
- 3) To reduce the cost of medicine.
- 4) To maintain the record history of ailment, its diagnosis, prescriptions and benefits received by patients.
- 5) Department will work on preventive, curative & rehabilitation model prepared for diseases in india.

14) Starting of Post Graduate Institute :

The MUHS intends to start Post Graduate Institute at Nashik. This will be a milestone for catering health needs of growing population of Nashik.



III) Trends in Population Growth :

Burden of health problems on the society varies from region to region in the state. The tribal districts are loaded with genetic disorders, inherited diseases, malnutrition, infestation and infectious diseases. Advanced districts shows different problems like industrial hazards, pollution, psychiatric ailments, reproductive tract infections, HIV/AIDS and host of degenerative disorders. In addition, urban areas suffer due to problems of slums, overcrowding, want of civic amenities, growing crimes etc. Child abuse and atrocities against women are growing in all areas. Many parts of the state even now do not have adequate facilities for maternal and child health. There is mal distribution of health service facilities including doctors, nurses and para-clinical personnel. Following table shows doctor population ratio for the year 2016. The ratio is calculated by taking data of respective Maharashtra Councils.

Year	Approximate State Population	Number of Doctors					Total
		Medical	Dental	Ayurved	Unani	Homoeopathy	
2016	122107133	79288	31860	80,000		62482	253630

From the above table, doctor to population state average ratio is 1:481. For Allopathy doctors the ratio is 1:1540. As per 2011 census the population of India was 1210193422. India is the second largest country in the world next to China whereas 7th largest in land area. India is occupying 2.4% of the world land area whereas it is 17.31% in the population of world. The growth rate of population of Maharashtra was over 22.73% per year during 1991 to 2001 Census which has declined to 15.99% during 2001 to 2011 Census. **(Please see Annexure-1)**

Development Boards :

By an act of Parliament, Maharashtra is divided into three Development Board Regions for the convenience of economic, industrial and educational growth, namely (1) Rest of Maharashtra, (2) Marathwada and (3) Vidarbha **(Please see Annexure-2)**

During the period from 2001 to 2011, the population of Maharashtra has grown from 96,878,627 to 112,374,333 i.e. an increase by 15,494,345, registering an average growth rate of 15.99%.

It is noted from the data given in State Statistical Abstract of Maharashtra, published by Directorate of Economics and Statistics, Government of Maharashtra, Mumbai, that the average growth rate is 14.51% for the decade 2001-2011, however it has not been uniform for all the districts. The population of some districts has grown faster than the others.

The Population of Municipal Corporations of Maharashtra state which is calculated as



per the growth rate of previous 2 census i.e. 2001 & 2011, Shows that the Akola Municipal Corporation has recorded lowest growth rate of population where as the Pune & Pimpri chinchawad Municipal Corporation have recorded highest growth rate of population. **(Please see Annexure-3)**

The density of population per sq. km. gives more realistic picture of population distribution in the state. **(Please see Annexure-4)** It is highest in Mumbai sub urban i.e. 20980 per sq. km. and lowest in Gadchiroli i.e. 74.00 per sq.km.

In addition to the population, health needs of a society are also determined by: population of poor and weaker section e.g. scheduled caste, scheduled tribe, population of vulnerable section of society e.g. population of children below 6 years, population of pregnant women and population of old. Per capita income also needs consideration.

Doctor : Population ratio :

Doctor : population ratio is nebulous indicator for deciding the need of medical practitioners required for a particular region. Doctor: population ratio in India is 1: 1700 (i.e. 1 doctor for 1700 population) while that for the state of Maharashtra is 1: 1540 If one takes into consideration all the MBBS, BDS, BAMS & BHMS doctors this ratio is 1: 481 this ratio includes all registered graduates. The above statistics provided by CEHAT (Centre for Enquiry into Health and Allied Themes).

However, to calculate the number of colleges to be permitted in the region or district, on the basis of doctor population ratio during the year 2017-2022, may not be ideal because doctor population ratio stated in various books, journals, news papers or World Health Organization is rough and crude. The present doctor population ratio is based on over-all population. There are differences in urban and rural population. The ratio is still different for tribal population. The spread of doctors in the population after completing education depends on many factors. The reason given for this is that out of the doctors registered to the Indian Councils or Maharashtra Councils, some go abroad for higher education or for better prospects, some accept Government jobs, and some become teachers and remaining enter into private practice in health service or in urban areas. All these factors are not within the purview of the University.

Besides this, there are many factors that need to be considered like Geographic location of the institute, facilities available for proper living, connectivity by road and railways, social factors, educational status of the population, availability of teachers etc, while considering a proposal to start a health science college. Thus, the use of doctor : population ratio as a guide for establishment of health science course colleges has many limitations.

Role Of The Universities And Need For Medical Colleges :

So far as the need for new medical colleges is considered, educationists hold different opinions. Many of them express the need for more medical colleges but a few are not in favour of new ones.

Many sections of our society in the interior even in our own state are virtually ignorant about various illness, vaccinations, hygiene practices and other pediatric and geriatric health hazards. The concept of primary health care is not efficient due to the lack of infrastructure and unavailability of trained manpower. The ratio of number of doctors and nurses in rural areas is lop-sided with very few trained doctors and paramedical personnel available in rural area.

It is distressing to note that in India, 76% of physicians render their health services to urban population, which comprises only 24% of total population, while 76% of rural population is looked after by a mere 24% of the total number of physicians. In Maharashtra, 42% of population is urban and is looked after by a huge doctor force.

At this juncture let us consider the doctor population ratio, if we need to analyze the need for having more doctors in our society.

Table - 1 : Scenario in the Medical Profession – Doctor: Population ratio

Ideal Doctor : Population ratio

New Standard : 1 doctor : 250 population

Table – 2 : Various Countries show different ratios for doctor : population

USA : 1 doctor per 390 population

Malaysia : 1 doctor per 1400 population

Kenya : 1 doctor per 7100 population

Argentina : 1 doctor per 330 population

Pakistan : 1 doctor per 1400 population

India : 1 doctor per 1700 population

[Maharashtra : 1 doctor per 1540 population]

The doctor population ratio for India is 1 doctor per 1700 population; that for the State of Maharashtra is 1 per 1540 population. It must also be kept in mind that the doctor: population ratio drawn for a state again largely differs within the state itself, if it is drawn separately for urban and rural areas.

Following table shows doctors population ratio for the years 2005, 2010 & 2016

Sr. No.	Year	State Population	No. of doctors					Total No. Doctors
			Medical	Dental	Ayur.	Unani	Homo.	
1	2005	102682000	87372	13890	47724	40478	189464	
2	2010	109591000	79326	18333	57360	50800	205819	
3	2016 (Approx)	122107133	79288	31860	80,000	62482	253630	



Doctor population ratio for Medical faculty only				
Sr. No.	Year	State Population	Total No. doctors	Doctor population ratio
1	2005	102682000	87372	1397
2	2010	109591000	79326	1175
3	2016 (Approx)	122107133	79288	1540

The above table shows that there is just-one doctor per 1540 population in the medical faculty. If we compare doctor population ratio of Maharashtra to U.S.A. there is vast gap. If we consider the ratio of 390 population : 1 doctor, then we require 288130 doctors for 122,107,133 population. But the intake capacity for Maharashtra is 4920 excluding Deemed University Seats.

By the year 2015, the number of registered doctors in medical faculty is only 79288 whereas required doctors are 288130. Hence, from this data one can conclude that Maharashtra is deficient by 208842 doctors.

The Doctor Population ratio in USA is 1:390. New standard is 1:250. Following table shows the deficit of number of doctors required in the State of Maharashtra.

Sr. No.	Year	State Population	Total No. of doctors	Doctors Population ratio	GAP of doctor population ratio	Total No. of doctors required	GAP of doctors to population
1	2005	102682000	189464	542	292	293377	103913
2	2010	109591000	205819	548	298	313117	107298
3	2016 (Approx)	122107133	253630	481	231	288130	34500

CET as a test of rising desire :

The need is also exemplified by the number of aspirants i.e. students appearing for the Common Entrance Test (CET) conducted by the state Govt.

Data of students appearing for the CET examination 2015 (for Academic Year 2015-16) shows that the number of students appearing for Health Sciences is 189050, out of these 39550 are passed and eligible to take the admission for M.B.B.S. / B.D.S. course. If we compare the pervious data for appearing CET, the number of students is continuously on the rise. Thus the felt need of the students is definitely in existence. But this is different for different courses. It is maximum for M.B.B.S. course and the least for B.H.M.S. course.

Year	Medical	Dental	Ayurved	Unani	Homoeopathy	Total
2005	4160	1770	2745	270	3235	12180
2010	4360	2620	3260	320	3335	13895
2016	4920	2560	3790	340	3445	15055

Health Manpower :

The term health manpower of the country includes both professional and auxiliary health personnel who are needed to provide the health care. Various norms have been devised but an ideal is yet to be reached.

If more colleges are likely to come into existence, man power in health science education will increase, and the state of Maharashtra will be a leading state which will provide well trained graduates and post graduates to other states and countries also. If this turns out to be true, revenue may be generated.

If more number of doctors is produced, out of them, at least a few may go to rural and tribal areas, and secondly cost of health services may get reduced. When there is an adequate production of health manpower then only there is utilization, saturation followed by migration.

It is a well established fact that if educational facilities are set up in district hospitals the standard of clinical services rendered increases.

National Health Policy 2002 has mentioned about uneven spread of Medical or Dental colleges across various parts of the country. Apart from uneven geographical distribution of medical institutions, quality of education is highly uneven and in several instances not up to the mark. Therefore, all health sciences colleges must direct their education, research and service activities towards addressing the priority health concerns of the community, region and nation, which they have a mandate to serve. The priority health concerns are to be identified jointly by Government, health care organizations, health professionals and the public.

Undergraduate Education In Health Sciences :

It is evident that there are certain districts with special needs to start Medical, Dental, Ayurved, Homoeopathy, Unani, Nursing, Occupational Therapy, Physiotherapy colleges. It is mentioned here that if a body / an institute / trust / corporation / Govt. wishes to start a college in the districts where no college of any pathy is in existence, preference will be given in opening of new College. Colleges that will be started in prime zones definitely have a market advantage and hence high fee will be levied. Thickly populated regions also need health science institutes as their health needs are enormous.

At present the region wise student intake capacity per one lakh Population for Konkan (Mumbai) region is 2.83, for pune region is 3.18, for Nagpur region is 4.68, for Marathwada (Aurangabad) region is 2.67, for Amravati region is 2.66 and for Nashik (North Maharashtra) region is 0.54. Hence to increase this ratio in North Maharashtra region, Government Medical College will be started in North Maharashtra.

* * * * *



IV) Role Of Medical Education In Improving Health Of People :

At this juncture it may be pertinent to note some facts about community health.

As per World Health Organization (1948) “Health is a state of complete physical, mental and social well being and not merely an absence of disease or infirmity”

WHO definition envisages three specific dimensions - the physical, the mental and the social. Many more may be cited, viz. spiritual, emotional, vocational, philosophical, cultural and so on. Health in the broad sense does not merely mean absence of disease or provision of diagnostic, curative and preventive services. It includes a state of physical, mental and social well-being. The harmonious balance of this state of the human individual integrated into his environment constitutes health. The WHO definition of health introduces the concept of “well-being”. The subject component of well-being is referred as “quality of life”. Certain important indicators are now frequently used to measure quality of life. The “Physical quality of Life index” is one. It consolidates three indicators viz. infant mortality, life expectancy at age one and literacy. The second is Human Development Index. Human Development Index is a composite index combining indicators representing three dimensions longevity, knowledge and income.

In 1978, at the Alma Ata-International conference, WHO declared “Health for All” through primary health care as the major social goal. The Alma Ata conference called on all governments to formulate national policies, strategies and plan of action to launch and sustain Primary Health Care as national health system.

Our national health policy, echoes the WHO call for “Health for All” and the Alma Ata declaration. It has laid down specific goals to bring down infant mortality, to raise life expectancy, to reduce crude death rate, to reduce birth rate and to reduce net reproduction rate.

Primary Health Care includes :-

- a) Education about prevailing health problems.
- b) Promotion of food supply and proper nutrition.
- c) Adequate supply of safe water and basic sanitation.
- d) Maternal and child health care including family planning.
- e) Immunization against infectious diseases.
- f) Prevention and control of endemic diseases.
- g) Appropriate treatment of common diseases and injuries.
- h) Provision of essential drugs.

Demographic profile of India and Maharashtra shows the following :

Sr. No.	Description	India	Maharashtra
1	Total population	1210193422	112374333
2	Area in Sq.Kms.	32,87,240	3,08,613
3	Crude Birth Rate	21.4 births/1,000 population (est.)	16.5
4	Crude Death Rate	7.0 deaths/1,000 population (est.)	6.2
5	Annual Growth Rate	1.25% (2013)	7.55%
6	Rural Population	68% (2014-15)	54.78% (2011)
7	Adult Literacy Rate	75%	82.91 %
8	Population Above 65 Years	5.3% (est.)	9.3% (above 60)
9	Population Below 15 Years	31.2%	27.2%
10	Sex Ratio Female Per 1000 Male	943	925
11	Population Density per Sq. Km.	382	365
12	Total fertility rate	2.3 children born / woman (est.)	2.2 children born / woman (est.)

In September 2000, Millennium summit in New York declared the Millennium Development Goals (MDGs) which place health at the heart of development and represent commitments by the Governments. The health related MDGs, important for our country are as under :

Millennium Development Goals :

1. To eradicate extreme poverty and hunger
2. To achieve universal primary education
3. To promote gender equality and empower women
4. To reduce child mortality
5. To improve maternal health
6. To combat HIV/AIDS, malaria, and other diseases
7. To ensure environmental sustainability
8. To develop a global partnership for development
9. UN Goals is a global project dedicated to spreading knowledge of MDG through various internet and offline awareness campaigns.



V) Analysis of Quantitative and Qualitative Distribution of the Health Sciences Education Facilities :

Health Science Education - Faculty wise colleges		
Sr. No.	Faculty	No. of colleges
1	Medical	38+08*+02#
2	Dental	29+04*+05#
3	Ayurved	63+03#
4	Unani	06
5	Homoeopathy	46+01#
6	Allied Health Sciences	
	i) Nursing (B.Sc. & P.B.B.Sc.)	100+03*+10#
	ii) Physiotherapy	32+03*+02#
	iii) Occupational Therapy	06
	iv) B.A.S.L.P.	05+01#
	v) Prosthetics & Orthotics	01+01#
	Total =	326+18*+25# =369

* Colleges previously affiliated to MUHS but now under Deemed Universities.

Colleges never affiliated to MUHS and established under Deemed Universities.

Medical Education :

The current quantitative status of the medical colleges in the state is as given below :
Region wise (Development Board) distribution of Medical Colleges with intake capacity is as given below :

Sr. No.	Development Board	No. of colleges	Total Intake
1	Rest of Maharashtra	24	3120
2	Marathwada	06	700
3	Vidarbha	08	1100
	Total	38	4920

There are Twelve Medical colleges whose admissions are carried out on all India basis as given below :

Sr. No.	Name of the College	Region	Status of the College
1*	Dr. D. Y. Patil Medical College, Nerul, Navi Mumbai	Rest of Maharashtra	Deemed
2*	M.G.M. Medical College, Kamothe, Navi Mumbai	Rest of Maharashtra	Deemed
3*	Dr. D.Y. Patil Medical College, Pimpri, Pune	Rest of Maharashtra	Deemed
4*	Krishna Institute of Medical Sciences, Karad, Satara	Rest of Maharashtra	Deemed
5*	D. Y. Patil Education Society's Medical College, Kolhapur	Rest of Maharashtra	Deemed
6*	Rural Medical Foundation, Medical College, Pravara Nagar, Loni, Ahmednagar	Rest of Maharashtra	Deemed
7*	MGM Medical College, Aurangabad	Marathwada	Deemed
8*	Jawaharlal Nehru Medical College, Sawangi (Meghe), Wardha	Vidarbha	Deemed
9**	Armed Forces Medical College, Pune	Rest of Maharashtra	Central Govt.college
10***	MGIMS, Sevagram, Wardha	Vidarbha	Central Govt.+State Govt. Aided college
11#	Bharti Vidyapeeth Medical College, Pune	Rest of Maharashtra	Deemed
12#	Bharti Vidyapeeth Medical College, Sangli	Rest of Maharashtra	Deemed
* Colleges previously affiliated to MUHS but now under Deemed Universities.			
** Admissions on All India basis.			
*** 50% students from Maharashtra & 50% students from Non-Maharashtra.			
# Colleges never affiliated to MUHS and established under Deemed Universities.			

The intake capacity of affiliated colleges to population ratio is as given in the table below :

Sr. No.	Region	Intake	Population 2011	Intake capacity : Population ratio
1	Rest of Maharashtra	3120	70629910	1: 22638
2	Marathwada	700	18731872	1: 26760
3	Vidarbha	1100	23012551	1: 20921
	State as a whole	4920	112374333	1: 22840



On comparison of the intake to population ratio for different regions, it is concluded that it is highest for Vidarbha region and lowest for Marathwada region. (District wise Medical colleges are given in the Table No. 1.

Dental Education :

The current quantitative status of the Dental colleges in the state is as given below : Region wise (Development board) distribution of dental colleges with intake capacity is as given below :

Sr. No.	Development Board	No. of Colleges	Total Intake
1	Rest of Maharashtra	17	1560
2	Marathwada	07	600
3	Vidarbha	05	400
	Total	29	2560

There are Nine Dental colleges whose admissions are carried out on all India basis as given below :

Sr. No.	Name of the College	Region	Status of the college
1*	Dr. D. Y. Patil Dental College, Nerul, Navi Mumbai	Rest of Maharashtra	Deemed
2*	Dr. D.Y.Patil Dental College,Pimpri, Pune	Rest of Maharashtra	Deemed
3*	PMT Rural Dental College, Loni, Ahmednagar	Rest of Maharashtra	Deemed
4*	Smt. Radhikabai Meghe Memorial Trust's Shri Sharad Pawar Dental College & Hosp., Sawangi (Meghe), Wardha	Vidarbha	Deemed
5#	Bharti Vidyapeeth Dental College & Hospital, Mumbai	Rest of Maharashtra	Deemed
6#	Bharti Vidyapeeth Dental College & Hospital, Pune	Rest of Maharashtra	Deemed
7#	Bharti Vidyapeeth Dental College & Hospital, Sangli	Rest of Maharashtra	Deemed
8#	D. Y. Patil Dental College & Hospital, Kolhapur	Rest of Maharashtra	Deemed

9#	School of Dental Sciences, Krishna Inst. of Medical. Sciences. Karad, Satara	Rest of Maharashtra	Deemed
* Colleges previously affiliated to MUHS but now under Deemed Universities.			
# Colleges never affiliated to MUHS & established under Deemed Universities.			

The intake capacity to population ratio is as given in the table below :

Sr. No.	Region	Intake	Population 2011	Intake capacity : Population ratio
1	Rest of Maharashtra	1560	70629910	1 : 45276
2	Marathwada	600	18731872	1 : 31220
3	Vidarbha	400	23012551	1 : 57531
	State as a whole	2560	112374333	1 : 43896

On comparison of the intake to population ratio for different regions, it is concluded that it is highest for Marathwada and lowest for Vidarbha region. (Districtwise dental colleges are given in the Table No. 2.

Ayurved Education :

The current quantitative status of the Ayurvedic colleges in the state is as given below : Region wise (Development board) distribution of Ayurvedic colleges with intake capacity is as given below :

Sr. No.	Development Board	No. of Colleges	Total Intake
1	Rest of Maharashtra	38	2270
2	Marathwada	09	610
3	Vidarbha	16	910
	Total	63	3790

There are Three Ayurved colleges whose admissions are carried out on all India basis as given below :

Sr. No.	Name of the College	Region	Status of the College
1#	Dr. D. Y. Patil College of Ayurveda and Research Institute, Nerul, Navi Mumbai-400706	Rest of Maharashtra	Deemed
2#	Bharti Vidyapeeth's College of Ayurved, Katraj - Dhanakwadi, Pune	Rest of Maharashtra	Deemed



**MAHARASHTRA UNIVERSITY OF HEALTH SCIENCES,
NASHIK**

3#	Datta Meghe Institute of Sciences, Nagpur's Mahatma Gandhi Ayurved College, Hospital & Research Centre, Sawangi, Meghe, Dist. Wardha	Vidarbha	Deemed
# Colleges never affiliated to MUHS and established under Deemed Universities			

The intake capacity to population ratio is as given in the table below :

Sr. No.	Region	Intake	Estimated Population 2011	Intake capacity : Population ratio
1	Rest of Maharashtra	2270	70629910	1 : 31114
2	Marathwada	610	18731872	1 : 30708
3	Vidarbha	910	23012551	1 : 25289
State as a whole		3790	112374333	1 : 29650

On comparison of the intake to population ratio for different regions, it is concluded that it is highest for Vidarbha and lowest for Rest of Maharashtra region. (Districtwise unani colleges are given in the Table No. 3.

Unani Education :

The current quantitative status of the Unani colleges in the state is as given below :

Region wise (Development Board) distribution of Unani colleges with intake capacity is as given below :

Sr. No.	Development Board	No. of Colleges	Total Intake
1	Rest of Maharashtra	05	290
2	Marathwada	01	50
3	Vidarbha	--	--
Total		06	340

At present there is no Unani college in Vidarbha region.

The intake capacity to population ratio is as given in the table below:

Sr. No.	Region	Intake	Population 2011	Intake capacity : Population ratio
1	Rest of Maharashtra	290	70629910	1: 243551
2	Marathwada	50	18731872	1: 374637
3	Vidarbha	--	23012551	0: 23012551
State as a whole		340	112374333	1: 330513

On comparison of the intake to population ratio for different regions, it is concluded that it is highest for Rest of Maharashtra and lowest for Vidarbha region. (District wise

unani colleges are given in the Table No. 4.

Homoeopathy Education :

The current quantitative status of the Homeopathic Colleges in the state is as given below:

Region wise (Development board) distribution of Homeopathic Colleges with intake capacity is as given below:

Sr. No.	Development Board	No. of Colleges	Total Intake
1	Rest of Maharashtra	30	2325
2	Marathwada	08	625
3	Vidarbha	08	495
	Total	46	3445

There are One Homoeopathy colleges whose admissions are carried out on all India basis as given below:

Sr. No.	Name of the College	Region	Status of the College
1#	Bharti Vidyapeeth's College of Homoeopathy, Katraj, Pune	Rest of Maharashtra	Deemed
# Colleges never affiliated to MUHS and established under Deemed Universities			

The intake capacity to population ratio is as given in the table below:

Sr. No.	Region	Intake	Population 2011	Intake capacity : Population ratio
1	Rest of Maharashtra	2325	70629910	1: 30378
2	Marathwada	625	18731872	1: 29971
3	Vidarbha	495	23012551	1: 46490
	State as a whole	3445	112374333	1: 326120

On comparison of the intake to population ratio for different regions, it is concluded that it is highest for Marathwada and lowest for Vidarbha region. (District wise Homoeopathy colleges are given in the Table No. 5.

Allied Health Sciences :

The current quantitative status of the Allied Health Sciences colleges in the state is as given below :

Region wise (Development Board) distribution of Allied Health Sciences colleges with intake capacity is as given below:



Nursing Education :

The current quantitative status of the Nursing colleges in the state is as given below :

Region wise (Development board) distribution of Nursing colleges with intake capacity is as given below:

B. Sc. Nursing & P.B.B.Sc. Nursing

Sr. No.	Development Board	No. of Colleges	Total Intake
1	Rest of Maharashtra	60	2880
2	Marathwada	21	960
3	Vidarbha	19	800
	Total	100	4640

There are fifteen Nursing colleges whose admissions are carried out on all India basis as given below :

Sr. No.	Name of the College	Region	Status of the College
1*	D Y Patil Pratishthan's College of Nursing, Pune (B.Sc.)	Rest of Maharashtra	Deemed
2*	Pravara Medical Trust's College of Nursing, Loni, Anagar (B.Sc. & P.B.B.Sc.)	Rest of Maharashtra	Deemed
3*	Radhikabai Meghe Memorial Trust's College of Nursing, Sawangi (Meghe), Wardha (B.Sc. & P.B.B.Sc.)	Vidarbha	Deemed
4**	College of B.Sc. Nursing AFMC, Pune (B.Sc. & P.B.B.Sc.)	Central Govt.	---
5**	School of Nursing, INHS Asvini, Colaba, Mumbai	Central Govt.	---
6#	Bharti Vidyapeeth College Of Nursing, C/o Bharati Vidyapeeth University, Dental College, Sector-7, Belapur, Navi Mumbai	Rest of Maharashtra	Deemed
7#	Dr. D. Y. Patil College Of Nursing, D. Y. Patil Vijay Nagar, Sector 7, Nerul, Navi Mumbai	Rest of Maharashtra	Deemed
8#	Leelabai Thackersey College Of Nursing, S.N.D.T. Women's University, 1, Nathibai Thackersey Road, Mumbai	Rest of Maharashtra	Deemed
9#	Bharti Vidyapeeth College Of Nursing, Pune, Satara Road, Katraj - Dhankawadi, Pune	Rest of Maharashtra	Deemed

10#	Tilak Maharashtra University, Institute of Nursing Education & Res., Vidyapeeth Bhavan, Mukundnagar, Pune	Rest of Maharashtra	Deemed
11#	Symbiosis College of Nursing, Symbiosis Vishwabhavan, Senapati Bapat Road, Pune (B.Sc. & P.B.B.Sc.)	Rest of Maharashtra	Deemed
12#	Bharti Vidyapeeth College of Nursing, Miraj Sangli, Road, Wanless Wadi, Sangli (B.Sc. & P.B.B.Sc.)	Rest of Maharashtra	Deemed
13#	Krishna Institute Of Medical Sciences, College of Nursing, Krishna Hospital & Medical Sciences, College of Nursing, Dhebewadi Road, Malkapur, Tal. Karad, Dist – Satara (B.Sc. & P.B.B.Sc.)	Rest of Maharashtra	Deemed
14#	Dr. D. Y. Patil College of Nursing, Kadamwadi, Tq. Karveer, Kolhapur (B.Sc. & P.B.B.Sc.)	Rest of Maharashtra	Deemed
15#	Mother Teresa Institution of Nursing, Sr. No. 448/1, Revgaon, Road, Jalna	Marathwada	Deemed
* Colleges previously affiliated to MUHS but now under Deemed Universities.			
** Admissions on all India basis.			
# Colleges never affiliated to MUHS and established under Deemed Universities.			

The intake capacity to population ratio is as given in the table below :

Sr. No.	Region	Intake	Population 2011	Intake capacity : Population ratio
1	Rest of Maharashtra	2880	70629910	1 : 24524
2	Marathwada	960	18731872	1 : 19512
3	Vidarbha	800	23012551	1 : 28766
	State as a whole	4640	112374333	1 : 24219

On comparison of the intake to population ratio for different regions, it is concluded that it is highest for Marathwada and lowest for Vidarbha region. (District wise B.Sc. Nursing & P.B.B.Sc. Nursing colleges are given in the Table No. 6.

Physiotherapy Education :

Sr. No.	Development Board	No. of Colleges	Total Intake
1	Rest of Maharashtra	24	790
2	Marathwada	05	165
3	Vidarbha	03	130
	Total	32	1085



MAHARASHTRA UNIVERSITY OF HEALTH SCIENCES, NASHIK

There are Five Physiotherapy colleges whose admissions are carried out on all India basis as given below:

Sr. No.	Name of the College	Region	Status of the College
1*	Dr. D. Y. Patil Pratishthan College of Physiotherapy, Pune	Rest of Maharashtra	Deemed
2*	P.M.T 's College of Physiotherapy, Loni, Ahmednagar	Rest of Maharashtra	Deemed
3*	Ravi Nair Physiotherapy College, Sawangi-Meghe Wardha	Vidarbha	Deemed
4#	Dr. D. Y. Patil Pratisthan College of Physi. College, Mumbai	Rest of Maharashtra	Deemed
5#	K .C. T's College of Physiotherapy, Karad, Dist. Satara	Rest of Maharashtra	Deemed
* Colleges previously affiliated to MUHS but now under Deemed Universities.			
# Colleges never affiliated to MUHS and established under Deemed Universities.			

The intake capacity to population ratio is as given in the table below:

Sr. No.	Region	Intake	Population 2011	Intake capacity : Population ratio
1	Rest of Maharashtra	790	70629910	1 : 89405
2	Marathwada	165	18731872	1 : 113526
3	Vidarbha	130	23012551	1 : 177020
	State as a whole	1085	112374333	1 : 103571

On comparison of the intake to population ratio for different regions, it is concluded that it is highest for Rest of Maharashtra and lowest for Vidarbha region. (District wise physiotherapy colleges are given in the Table No. 7.

Occupational Therapy Education :

Sr. No.	Development Board	No. of Colleges	Total Intake
1	Rest of Maharashtra	05	100
2	Marathwada	--	--
3	Vidarbha	01	30
	Total	06	130

The intake capacity to population ratio is as given in the table below:

Sr. No.	Region	Intake	Population 2011	Intake capacity : Population ratio
1	Rest of Maharashtra	100	70629910	1 : 706299
2	Marathwada	--	18731872	0 : 18731872
3	Vidarbha	30	23012551	1 : 767085
	State as a whole	130	112374333	1 : 864418

On comparison of the intake to population ratio for different regions, it is concluded that it is highest for Rest of Maharashtra and lowest for Marathwada region. (District wise physiotherapy colleges are given in the Table No. 8.

B.A.S.L.P. Education

Sr. No.	Development Board	No. of Colleges	Total Intake
1	Rest of Maharashtra	03	50+03@=53
2	Marathwada	01	20
3	Vidarbha	01	20
	Total	05	93

@ Admissions for Foreign Students.

There is One BASLP College whose admissions are carried out on all India basis as given below :

Sr. No.	Name of the College	Region	Status of the College
1#	Bharti Vidyapeeth College of BASLP, Pune	Rest of Maharashtra	Deemed

These colleges not affiliated to MUHS but under Deemed Universities

The intake capacity to population ratio is as given in the table below :

Sr. No.	Region	Intake	Population 2011	Intake capacity : Population ratio
1	Rest of Maharashtra	53	70629910	1 : 967533
2	Marathwada	20	18731872	1 : 936594
3	Vidarbha	20	23012551	1 : 1150628
	State as a whole	93	112374333	1 : 994463

On comparison of the intake to population ratio for different regions, it is concluded that



it is highest for Marathwada and lowest for Vidarbha region. (District wise B.A.S.L.P. colleges are given in the Table No. 9.

Prosthetics & Orthotics Education

Sr. No.	Name of the College	Region	Status of the College	Total intake capacity
01	All India Institute of Medicine & Rehabilitation, Mumbai	Rest of Maharashtra	Govt.	30

There is One BPO College whose admissions are carried out on all India basis as given below

Sr. No.	Name of the College	Region	Status of the College
1#	Pravara Medical Trust's College of Bachelor of Prosthetics & Orthotics, Loni, Ahmednagar	Rest of Maharashtra	Deemed
# Colleges never affiliated to MUHS and established under Deemed Universities			

Considering the current intake capacity of Occupational Therapy, B.A.S.L.P. and B.P.O. colleges for all three regions it is concluded that there is an urgent need to start these courses in allied health sciences in all regions of Maharashtra. Training of allied health professionals involves a lot of "Hands on Training" therefore the student teacher ratio and the student patient ratio has to be as minimum as possible. But there is an acute shortage of qualified teachers in core subjects.

The postgraduate facilities are practically non existent in the said courses. In addition, the courses in allied health sciences require adequate number of medical teachers of basic and clinical science subjects.

Overall conclusion :

At present there is no Medical college in 13 districts, no Dental college in 16 districts, no Ayurvedic college in 07 districts, no Unani colleges in 30 districts, no Homoeopathy college exists in 09 districts. In view of the present Intake Capacity in Allied health science colleges, at present still there are 03 districts where no Nursing colleges, 20 districts where no Physiotherapy colleges, 33 districts where no Occupational therapy colleges, 32 district where no BASLP colleges exist.

While considering the suitability of a college, factors like teacher's availability, infrastructure, geographic location, roadways connectivity, water, electricity and provision of basic amenities will be looked into as per respective councils and university norms.

* * * * *

VI) PROPOSALS :

Looking at the current manpower production for the state and its requirement, it may be concluded that the existing Health Sciences Education institutions are barely sufficient at this juncture. However what is required is an equitable distribution of existing intake capacity between all districts and also a projection for the future. Therefore, there is a need to start Health Science Colleges of each pathy in **every district**, when one has to plan for the future.

District wise Perspective Plan :

In each sector of development, if smaller areas are considered, then each one of them has better chance of availability of facility. This is true for health science education also. It has been observed that if deficit is calculated region wise and a health institution is allotted to that region then there are always chances that these will be available in few selected districts of that region. Hence, colleges that have come up during Fourth Perspective Plan are those only from certain districts of particular region. When the Fourth Perspective Plan came in to existence faculty wise and district wise colleges came in to existence as :

Faculty	Medical	Dental	Ayurved	Unani	Homo.	O.T.	P.T.	Nursing (B.Sc. & P.B.B.Sc.)		BASLP
Districts	Mumbai Ratnagiri Satara Solapur Nashik Jalna Chandrapur	Pune Nanded Akola	Nashik Aurangabad Hingoli Buldhana	--	Ahmednagar Jalgaon	Sangli Nanded	--	Mumbai Mumbai Upnagar Thane Ratnagiri Raigad Sindhudurga Pune Sangli Kolhapur Solapur Nashik Ahmednagar Aurangabad	Osmanabad Nanded Beed Latur Jalna Nagpur Bhandara Gadchiroli Chandrapur Amravati Akola Washim Buldhana	

Calculation of Health-Science colleges on regional basis, always has inherent danger of accumulating colleges in the developed part of the region. Therefore certain districts remain unattended always. Because of the above reasons, in each region two or three districts, which are economically backward, having more tribal population, not a single college came up during First & Second Perspective Plan. As per MUHS Act 1998, Section 4 (g), one of the objectives is “to promote equitable distribution of facilities of Health Sciences Education”. In view of this, it is appropriate to consider the deficit district wise instead of region wise. The distribution of Health Science institutions district wise is thus more suitable for consideration of equity and equitability.

A) Starting of New Colleges of Health Science Education :

1. a) In order to promote undeveloped areas, proposals from those districts where no



health science college of any pathy is in existence will be recommended to the Government. The proposals of any pathy college from the districts where that 'pathy college' is not in existence will be recommended to the Government.

b) Also, considering infrastructure and availability of faculty, cities where Municipal Corporation exists, one college for every Five lakhs population will be recommended (for this purpose proposals submitted within the radius of 30 kms. beyond Municipal corporation boundary will be considered in Corporation area.) This will be applicable for all the pathies.

If essentiality certificate is issued by the Government to the college which is not recommended by the University, because of geographical restriction of Perspective Plan, then **Three** times of prescribed fee will be levied by the University from such a college at the time of First Time Affiliation.

c) Number of Colleges already existing within Municipal Corporation areas not to be considered for that particular district. That means excluding Municipal Corporation area (plus radius of 30 kms. beyond Municipal corporation boundary), that district will be considered as separate unit. For such a separate unit i.e. rest of the district area excluding Municipal Corporation area as defined above, a college per **Five** lakhs population will be recommended. This will be applicable for all the pathies. However if the same pathy college exists in the Tahsil area where proposed college is located, then that proposal will not be recommended.

If essentiality certificate is issued by the Government to the college which is not recommended by the University, because of geographical restriction of Perspective Plan, then **Three** times of prescribed fee will be levied by the University from such a college at the time of First Time Affiliation.

d) Institutions / Colleges those who had already applied for Starting of New Colleges / New Post Graduate Courses / Increase in Intake Capacity but could not obtain Essentiality / No Objection Certificate, from Maharashtra Government in that particular Academic Session, should apply for revalidation of the proposal by paying of prescribed fees. Such proposals can be revalidated for **Five** Academic Sessions. After five Academic Sessions, such proposals will be treated as Closed and such institution / Colleges will have to apply afresh with prescribed fee. ***As and when the proposal is closed, (i.e after Six years from date of recommendation of proposal to the state Government.) the same will be informed to the State Government.***

e) Those Institutions / Colleges, who have received Consent of Affiliation for opening of New College / starting new PG courses / Increase in Intake Capacity but could not obtain Permission from Central Government within one year from the date of its issuance, should apply for extension of Consent of Affiliation by paying fee Prescribed in Ordinance. The

proposal will be reviewed and Consent of Affiliation shall be extended till the Validity of initial / renewed Essentiality Certificate issued by the State Government.

However those institutions / colleges who have not received Permission from Central Govt. / Central Council within 10 years from the date of recommendations of proposal to the state Government, then that proposal will be treated as closed and such institute / college will have to apply afresh with prescribed fee. ***As and when the proposal is closed, (i.e after Ten years from date of recommendation of proposal to the state Government.) the same will be intimated to the concerned Central council.***

f) As per MUHS Act 1998, Section 73, the University can withdraw its affiliation granted to College / Institute if management fails to comply the provisions prescribed in section 63 & 67 of MUHS Act 1998. The College / institute management do not have right to close the college / Institute on its own. However as per MUHS Act 1998 Section 74, a management can apply for closer of college, if it is not possible for management to run the college / institute.

g) As per MUHS Act 1998 Section 63 (I) a management of affiliated college / Institute can be transferred by paying transfer fee to the University as prescribed in MUHS fee Ordinance revised from time to time.

h) In last five to seven years it is observed that some of the institutions have all of sudden closed their colleges, there by putting future of the students at risk. Secondly, some colleges do not pay pending dues, to the University. Hence, for transfer of student, recovery of pending dues the University has made a Provision of Bank Guaranty / Security deposit mandatory to all its affiliated colleges except Government, Government aided & Corporation colleges. The Hon'ble Chancellor of the University have accorded his consent for the same in the form of Affiliation fee Ordinance.

i) Difference of affiliation fee including difference of Three Times fee (as applicable) will be charged from colleges at the time of grant of First Time Affiliation. Difference of affiliation, Restoration of proposal, Extension of Consent of Affiliation and other affiliation related fees shall be payable by the applicant to the University as per applicable affiliation fee Ordinance as revised from time to time. This provision is applicable to all pathies and courses.

J) If the Management Council directs to return the proposal for Starting of New Colleges / Courses / Increase in Intake Capacity, then the proposal will be returned by deducting 10% amount of the prescribed affiliation fee. (M.C Resolution No. 276/2015, dt. 16/12/2015)

Note :- The current population of that year will be calculated as per the ratio of Increase / Decrease rate between previous two censuses.

2. The management which proposes for the establishment of new institutions must fulfill all the conditions as laid down in the Act, the rules and regulations laid down by the University. It is desirable that such organizations have the experience of managing successfully institutions



of similar nature. **In addition they must also have the experience of running a hospital** with prescribed number of beds, OPD, IPD and infrastructure as per Central Council norms.

3. (a) The University desires that the Govt. can take initiative to set up new colleges in remote and tribble areas as notified by Govt. of Maharashtra. For this purpose the managements who applies in remote areas will get 50% concession in prescribed fee for opening of new college.

(b) If the Municipal Corporation applies for opening of new colleges, 25% concession in prescribed fee for opening of college shall be granted.

(c) This concession mentioned above in 3 (a) and (b), shall be granted after receipt of request from such institutes who have been granted First Time Affiliation for opening of new college. Initially the institute will have to deposite full 100% amount of prescribed fee.

B) Increase in Intake Capacity :

In order to strengthen the existing colleges and to ensure the viability of colleges, the proposal of such colleges will be recommended for the increase in intake capacity, provided such colleges fulfills the norms for existing courses as per respective Central Councils and whose first batch has passed out from those colleges.

C) Upgradation of Existing Institutions :

1. The College and hospitals undertaking teaching and training extend better health services, if they are upgraded to the level of Post Graduate facilities. The health science education institutions, especially of modern medicine located at district places will therefore be permitted to upgrade themselves to the level of Post Graduate and Super Specialty Institutions at revenue divisional Headquarters. This will provide access to better health care for the people of particular region.

2. In view of the continuously growing need for nursing and allied health manpower for the state, the proposals for establishing such courses in the colleges belonging to the respective faculty will be promoted.

3. In addition to equity in quantity, it is also necessary that the equity in quality be also achieved across the regions. The quality of health science education is determined by percapita expenditure on patients, student teacher ratio, patient in flow, equipment and the infrastructure. Currently there is an acute shortage of suitable teachers in some institutions specially, those located in rural areas. There is also vast disparity in percapita expenditure done on creating and running the health science institutions across the regions. Therefore it is proposed that :-

(i) Of all these, quality of teachers and adequacy of teachers in terms of numbers is being encouraged by the University and strict adherence to Central Council norms. In addition, there are many subjects in different faculties where appropriate posts do not exist. Therefore, it is proposed that the existing vacancies from full time cadre must be filled expeditiously.

- (ii) To create suitable teachers by providing the opportunities of upgradation of knowledge and skill of individual teacher. To create suitable system of appointment for the teachers, the suitable method may include such systems as honorary system, part time system, visiting teachership, contributory lecturers, adjunct teachers in addition to the existing system wherever necessary as per Council norms.

D) Deficiency of Teachers :

There is a paucity of teachers in some of the faculties. This paucity is in decreasing order in Ayurvedic, Allied, Homoeopathy, Dental and Medical courses. To overcome this the University has decided to encourage affiliated college to start Post Graduate Courses / Increase in Intake Capacity.

* * * * *

VII) Post Graduate and Superspeciality Education in Health Sciences :

Since all the Under Graduate degrees of the University of All Pathies are recognized by the respective Central Councils and all health sciences Post Graduate courses, Super specialty & Ph.D. are affiliated from the Conventional Non-agricultural Universities to this University by Government order letter Nos. Maharashtra Ordinance IX, 2005, dated 31st October 2005.

Maharashtra is one of the leading progressive states in India. Post graduation and its further specialization in a subject play a significant role in the health scenario of the State. The University, being the University of Health Sciences, it endeavors in the fulfillment of the needs of health sciences to the people vis-a-vis developing the quality in health sciences education with reference to teachers, students and medical professionals in the state.

The present scenario of health sciences education does not meet with primary health care needs of the entire population of the State due to certain foreseeable changes in the health problems.

Keeping this in mind, the University strives to promote Postgraduate and Super specialty Education with quality research in all disciplines in the University and affiliated Institutes. These policy measures will help to alleviate the critical shortages in health care system and also upgrade hospital facilities.

Various post graduate courses in all faculties are run in most of the health sciences colleges. The faculty wise seats position of individual colleges **at the time of grant of First Time Affiliation** is given below:



MAHARASHTRA UNIVERSITY OF HEALTH SCIENCES, NASHIK

Faculty :- Medical A) MD / MS (PG Degree & Dip.) Courses		Name of College	Anatomy		Physiology		Bio-chemistry		Pharmacology		Micro-Biology		Pathology		F.M.T.		General Medicine		TB & Chest		Psychiatry		DVL(Skin VD)		Pediatrics		Sport Medicine		Marine Medicine		Total
			Deg.	Dip.	Deg.	Dip.	Deg.	Dip.	Deg.	Dip.	Deg.	Dip.	Deg.	Dip.	Deg.	Dip.	Deg.	Dip.	Deg.	Dip.	Deg.	Dip.	Deg.	Dip.	Deg.	Dip.	Deg.	Dip.	Deg.	Dip.	
1	Grant GMC Mumbai		2	4	3	3	2	9	3	2	18	3	2	2	2	2	2	2	2	2	2	2	1	1	9	9	--	--	74		
2	Seth GS Medical College, Mumbai		6	9	--	10	6	14	--	2	16	4	--	2	--	16	4	--	5	1	4	2	2	2	16	12	--	--	107		
3	TN Medical College, Mumbai		5	4	--	5	4	11	--	1	14	3	--	1	1	14	3	--	4	4	2	1	9	3	3	--	--	71			
4	LTM Medical College Mumbai		2	2	2	3	6	8	--	2	17	3	--	2	--	17	3	--	3	5	3	1	9	3	--	--	--	--	69		
5	K.J. Somaiya Medical College Mumbai		--	--	--	--	--	--	--	--	--	--	--	--	--	--	--	--	--	--	--	--	--	--	1	--	--	--	01		
6	AFMC, Pune		4	4	2	2	9	10	--	2	22	4	--	2	--	22	4	--	5	1	4	2	8	3	2	--	--	84			
7	B.J.GMC, Pune		2	4	4	4	4	6	4	1	16	3	2	4	1	16	3	2	4	2	3	3	5	3	--	--	--	--	70		
8	STES's SKN MC, Narhe, Pune		2	2	2	2	2	5	2	--	4	2	--	2	--	4	2	--	1	--	1	--	3	--	--	--	--	28			
9	GMC, Miraj		3	2	4	2	1	5	4	--	7	--	--	4	--	7	--	--	--	--	--	--	2	2	--	--	--	--	32		
10	MIMER's MC Talegaon Dhabhade Pune		2	2	1	2	2	2	--	--	4	--	--	--	--	4	--	--	--	--	--	2	--	--	--	--	--	17			
11	Dr. VVPF's MC, Ahmednagar		2	2	--	2	2	2	--	--	3	--	--	--	--	3	--	--	--	--	--	1	--	3	1	--	--	18			
12	VM GMC, Solapur		3	3	2	3	3	4	3	--	5	--	--	3	--	5	--	--	--	--	--	--	3	1	--	--	--	--	30		
13	ACPM Medical College, Dhule		--	--	--	--	2	2	--	--	4	--	--	--	--	4	--	--	--	--	--	--	2	--	--	--	--	10			
14	NDMVP's Dr. VP MC, Nashik		--	--	--	2	3	3	2	--	5	2	--	2	--	5	2	--	2	1	2	1	2	1	--	--	--	--	26		
15	Dr. Ulhas Patil MC, Jalgaon		1	2	1	--	2	1	--	--	--	--	--	--	--	--	--	--	--	--	--	--	--	--	--	--	--	--	07		
16	GMC, Aurangabad		3	3	2	3	3	6	4	1	2	5	--	--	--	5	--	--	--	--	--	--	3	2	--	--	--	--	40		
17	GMC, Nanded		2	2	2	2	1	4	--	2	2	2	--	2	--	2	2	--	--	--	--	--	--	--	--	--	--	--	19		
18	SRTM, Ambajogai		3	2	3	2	3	4	2	3	3	--	3	4	2	3	--	--	--	--	--	--	1	1	--	--	--	--	27		
19	GMC, Latur		2	2	--	2	2	4	1	2	4	--	4	1	2	4	--	--	--	--	--	--	2	1	--	--	--	--	22		
20	MIMSR, MC, Latur		--	2	1	1	2	2	--	--	2	--	--	--	--	2	--	--	--	--	--	--	2	--	--	--	--	--	14		
21	GMC, Nagpur		3	4	4	4	4	6	--	5	11	1	2	--	3	--	11	1	2	--	--	3	--	5	3	--	--	55			
22	IG GMC, Nagpur		3	3	2	2	4	4	--	3	6	2	--	3	--	6	2	--	--	--	--	--	3	1	--	--	--	--	33		
23	NKP Salve, MC, Nagpur		3	3	1	2	4	7	--	--	8	2	--	--	--	8	2	--	3	--	3	1	6	2	--	--	--	--	45		
24	MGIMS, MC Sevagram		2	2	2	4	5	4	--	2	6	--	2	--	6	--	6	--	1	1	1	1	22	22	--	--	--	--	35		
25	Dr. PDM MC, Amravati		2	1	--	2	2	2	--	--	1	1	--	--	--	1	1	--	2	--	--	--	--	--	--	--	--	--	14		
26	TPCT, TMC&H, Navi Mumbai		--	--	--	--	--	--	--	--	--	--	--	--	--	--	--	--	--	--	--	--	--	--	--	--	--	--	0		
27	VN GMC, Yavatmal		2	--	2	2	1	1	--	1	2	--	--	--	--	2	--	--	--	--	--	--	2	--	--	--	--	--	13		
28	GMC, Akola		--	2	2	2	2	2	--	2	--	--	--	--	--	--	--	--	--	--	--	--	--	--	--	--	--	--	12		
		Total	59	66	42	68	81	128	22	32	05	188	32	04	32	17	34	13	98	50	02	0	0	0	0	0	0	973			

Sr. No.	Name of College	Radio-diagnosis		Radio-therapy		Anesthesia		Community Medicine		Gen. Surgery		Ophthalmology		Otorhino-laryngology		Ortho-paedic		Obstetrics & Gynaecology		IH & Blood Trans.		Hosp. Adm.		Phy. Med. & Reh.		Cardiac Anesthesia		Diabetology		Total
		Deg	Dip.	Deg	Dip.	Deg	Dip.	Deg	Dip.	Deg	Dip.	Deg	Dip.	Deg	Dip.	Deg	Dip.	Deg	Dip.	Deg	Dip.	Deg	Dip.	Deg	Dip.	Deg	Dip.	Deg	Dip.	
1	Grant GMC Mumbai	3	6	--	--	13	11	5	4	14	--	6	--	4	--	3	--	14	4	--	--	--	--	--	--	--	--	--	87	
2	Seth GS Medical College, Mumbai	6	5	--	--	22	16	17	2	12	--	3	11	4	--	11	--	24	12	2	--	--	--	--	--	2	--	1	150	
3	TN Medical College, Mumbai	7	3	--	--	14	9	9	1	14	--	4	--	6	--	3	--	7	5	--	--	--	--	--	--	--	--	1	83	
4	LTM Medical College, Mumbai	5	3	--	--	17	11	5	3	16	--	3	1	2	1	7	--	11	4	--	--	--	--	--	--	--	--	--	89	
5	K.J. Somaiya Medical College, Mumbai	--	--	--	--	--	--	--	--	--	--	--	--	--	--	--	--	--	2	--	--	--	--	--	--	--	--	--	02	
6	AFMC, Pune	7	1	--	--	15	2	12	3	21	--	8	2	6	2	3	--	8	4	2	--	8	6	--	--	--	--	--	110	
7	B.J.GMC, Pune	6	4	--	--	10	4	2	2	15	--	3	2	3	2	6	2	9	8	--	--	--	--	--	--	--	--	--	78	
8	STES's SKN MC, Nairhe, Pune	3	--	--	--	2	--	4	1	4	--	2	--	1	--	3	--	3	--	--	--	--	--	--	--	--	--	--	23	
9	GMC, Miraj	--	--	--	--	4	4	3	2	7	--	3	2	--	--	4	--	4	4	--	--	--	--	--	--	--	--	--	33	
10	MIMER's MC Talegaon Dhabhade Pune	--	--	--	--	--	--	2	--	4	--	2	--	--	--	2	--	1	--	--	--	--	--	--	--	--	--	--	11	
11	Dr. VVPF's MC, Ahmednagar	4	--	--	--	4	--	2	--	4	--	2	--	--	--	2	--	3	--	--	--	--	--	--	--	--	--	--	21	
12	VM GMC, Solapur	2	2	--	--	4	3	4	3	8	--	2	1	1	1	1	1	5	4	--	--	--	--	--	--	--	--	--	42	
13	ACPM Medical College, Dhule	1	--	--	--	3	--	--	--	4	--	1	--	--	--	1	2	2	1	--	--	--	--	--	--	--	--	--	15	
14	NDMVP's Dr. VP MC, Nashik	3	2	--	--	2	2	--	--	5	--	3	1	2	1	5	1	3	2	--	--	--	--	--	--	--	--	--	31	
15	Dr. Uhas Patil MC, Jalgaon	--	--	--	--	--	--	--	2	--	--	--	--	--	--	--	--	--	--	--	--	--	--	--	--	--	--	--	02	
16	GMC, Aurangabad	2	2	--	--	7	3	3	--	7	--	2	2	2	1	2	2	5	5	--	--	--	--	--	--	--	--	--	45	
17	GMC, Nanded	--	--	--	--	2	2	3	--	3	--	1	1	2	1	--	3	1	--	--	--	--	--	--	--	--	--	--	19	
18	SRTR, Ambajogai	--	--	--	--	3	2	2	1	3	--	1	1	2	1	--	2	2	--	--	--	--	--	--	--	--	--	--	21	
19	GMC, Latur	1	1	--	--	2	--	2	2	2	--	1	--	1	1	2	--	2	2	--	--	--	--	--	--	--	--	--	19	
20	MIMSR, MC, Latur	--	--	--	--	1	--	2	--	3	--	1	--	1	--	1	--	2	--	--	--	--	--	--	--	--	--	--	11	
21	GMC, Nagpur	4	8	2	--	7	6	3	4	13	--	4	3	3	2	6	--	7	6	--	--	--	--	--	--	--	--	--	78	
22	IG GMC, Nagpur	2	2	--	--	5	2	3	--	5	--	2	1	2	--	1	--	4	1	--	--	--	--	--	--	--	--	--	30	
23	NKP Salve, MC, Nagpur	5	2	--	--	6	2	4	--	10	--	3	1	2	--	3	1	6	2	--	--	--	--	--	--	--	--	--	47	
24	MGMS, MC Sevagram	2	2	1	--	4	1	5	--	4	--	4	1	2	1	2	2	4	--	--	--	--	--	--	--	--	--	--	37	
25	Dr. PDM MC, Amravati	--	--	--	--	1	--	2	--	2	--	1	--	--	--	3	--	1	--	--	--	--	--	--	--	--	--	--	10	
26	TPCT, TMC&H, Navi Mumbai	--	--	--	--	--	--	3	--	--	--	--	--	--	--	--	--	--	--	--	--	--	--	--	--	--	--	--	03	
27	VN GMC, Yavatmal	--	--	--	--	--	--	--	--	3	--	2	--	2	--	--	--	1	--	--	--	--	--	--	--	--	--	--	08	
28	GMC, Akola	--	--	--	--	--	--	--	--	--	--	--	--	--	--	--	--	2	--	--	--	--	--	--	--	--	--	--	02	
	Total	63	43	0	148	80	99	28	183	0	64	30	48	13	69	10	133	75	04	0	08	06	0	0	0	02	0	1107		



MAHARASHTRA UNIVERSITY OF HEALTH SCIENCES, NASHIK

Sr. No.	Name of College	Anatomy		Physiology		Bio-chemistry		Pharmacology		Micro-Biology		Pathology		F.M.T.		Gen. Medicine		TB & Chest		Psychiatry		DV &(S kin VD)		Pediatrics		Sport Medicine		Marine Medicine		Total
		Deg.	Dip.	Deg.	Dip.	Deg.	Dip.	Deg.	Dip.	Deg.	Dip.	Deg.	Dip.	Deg.	Dip.	Deg.	Dip.	Deg.	Dip.	Deg.	Dip.	Deg.	Dip.	Deg.	Dip.	Deg.	Dip.	Deg.	Dip.	
	Institute																													
1	School of Medical Asst. INHS, Ashvin, Colaba, Mumbai																													
2	Bombay Hospital Institute of Medical Sciences, Mumbai																													
3	Sancheti Institute of Orthopaedics & Rehabilitation, Pune																													
4	Postgraduate Institute of Swasthiyoga Pratishthan, Miraj																													
5	Sanjeevan Medical Foundation's ENT Postgraduate Training Institute, Miraj																													
6	AIIPM & R, Mumbai																													
7	ESI-PGIMSR & MGM Hospital, Parel, Mumbai																													
8	ESI-PGIMSR & MGM Hospital, Andhaeri, Mumbai																													
	Total	0	0	0	0	0	0	0	0	0	0	0	0	0	0	0	0	0	0	0	0	0	0	0	0	0	0	0	0	0

Sr. No.	Name of College	Radio-diagnosis		Radio-therapy		Anesthesia		Community Medicine		Gen. Surgery		Ophthal-mology		Otorhino-laryngology		Ortho-pedic		Obstetrics & Gynecology		IH & Blood Trans.		Hosp. Adm.		Phy. Med. & Reh.		Cardiac Anesthesia		Diabiology		Total
		Deg.	Dip.	Deg.	Dip.	Deg.	Dip.	Deg.	Dip.	Deg.	Dip.	Deg.	Dip.	Deg.	Dip.	Deg.	Dip.	Deg.	Dip.	Deg.	Dip.	Deg.	Dip.	Deg.	Dip.	Deg.	Dip.	Deg.	Dip.	
	Institute																													
1	School of Medical Asst. INHS, Ashvin, Colaba, Mumbai	2				3				6		3		2																19
2	Tata Memorial, Mumbai																													0
3	Bombay Hospital Institute of Medical Sciences, Mumbai	2				1				2		1				2		3											11	
4	Sancheti Institute of Orthopaedics & Rehabilitation, Pune															8	5												13	
5	Postgraduate Institute of Swasthiyoga Pratishthan, Miraj															2	2												04	
6	Sanjeevan Medical Foundation's ENT Postgraduate Training Institute, Miraj													1	2														03	
7	AIIPM & R, Mumbai																												02	
8	ESI-PGIMSR & MGM Hospital, Parel, Mumbai									1					2														04	
9	ESI-PGIMSR & MGM Hospital, Andhaeri, Mumbai									2									2										07	
	Total	04	0	0	0	0	0	0	0	11	0	04	0	03	02	14	07	08	0	0	0	0	0	0	0	0	0	0	63	

B) Super Speciality (DMM/Ch. Courses)

Sr. No.	Name of College	Cardiology	Neurology	Neuro Surgery	Plastic Surgery	CVTS	Pediatrics Surgery	Urology / Gento Urinary Surgery	Nephrology	Endocrinology	Neonatology	Medical Gastro-entology	Clinical Pharma-cology	ClinicalHaematology	Medical Oncology	Surgical Oncology	Paediatric Anesthesia	Total
1	Grant GMC Mumbai	3	2	1	4	3	1	1	--	--	--	--	--	--	--	--	--	15
2	Seth GS Medical College, Mumbai	6	2	4	2	6	6	4	2	3	1	2	3	2	--	--	2	45
3	TN Medical College, Mumbai	3	1	--	4	1	2	3	1	1	--	2	--	--	--	--	--	18
4	LTM Medical College Mumbai	4	--	2	2	3	2	4	--	--	1	4	--	--	--	--	--	22
5	AFMC, Pune	1	--	3	3	3	--	--	--	--	--	--	--	--	--	--	--	10
6	B.J.GMC, Pune	--	--	--	1	1	--	--	--	--	--	--	--	--	--	--	--	02
7	GMC, Nagpur	2	--	--	2	--	--	--	--	--	--	1	--	--	--	--	--	05
Institute																		
1	Tata Memorial, Mumbai	--	--	--	--	--	--	--	--	--	--	--	--	--	--	--	--	0
2	Bombay Hospital Institute of Medical Sciences, Mumbai	2	2	3	--	1	--	2	2	--	--	--	--	--	--	--	--	12
Total		21	08	13	18	18	11	14	04	04	02	09	03	02	0	0	02	129



MAHARASHTRA UNIVERSITY OF HEALTH SCIENCES, NASHIK

Faculty :- Dental (PG Degree & Dip. Courses)

Sr. No.	Name of College	Oral Pathology & Microbiology	Prosthodontics and Crown and Bridge	Orthodontics and Dentofacial Orthopaedics	Oral Maxillofacial Surgery	Periodontology	Paedodontics & Preventive Dentistry	Oral Medicine & Radiology	Conservative Dentistry & Endodontics	Public Health Dentistry	Total
1	Govt. Dental College, Mumbai	5	10	5	10	5	5	5	5	-	50
2	Nair Hospital Dental College, Mumbai	10	10	10	10	5	5	10	10	-	70
3	YMT Dental College, Kharghar, Navi Mumbai	5	2	5	5	5	3	3	5	-	33
4	TPCT's Tema Dental College, Navi Mumbai	-	3	-	3	3	2	-	3	-	14
5	M G M's Dental College Kamothe, N- Mumbai	3	3	3	4	3	-	-	2	-	20
6	AFMC Dental Wing, Pune	-	2	2	2	2	-	-	-	-	8
7	MA Rangoonwala College of Dental Science & Reserch Centre ,Pune	6	6	6	6	6	6	6	6	-	48
8	Vasantdada Patil Dental College , Sangli	2	2	5	-	2	-	3	5	-	19
9	Govt. Dental College, Aurangabad	3	3	-	-	3	-	-	3	-	12
10	CSMSS's Dental College ,Aurangabad	-	3	3	2	2	-	3	3	-	16
11	MGV's Dental College & Hospital, Nashik	6	3	3	-	6	2	4	5	-	29
12	Govt. Dental College, Nagpur	3	3	2	3	2	2	2	2	-	19
13	VSPM's Dental College Nagpur	3	4	3	3	4	3	5	4	-	29
14	J M F's ACPM Dental College, Dhule	-	2	3	5	2	3	-	5	3	23
15	Pandit Deendayal Upadhyay Dental College, Kegaon, Solapur	-	2	2	-	3	-	3	3	-	13
16	Tatyasaheb Kore Dental College & Nave Pargaon, Kolhapur	-	2	2	-	2	-	-	2	-	8
17	SMBT Dental College, Sangamner, Ahmednagar	3	5	5	-	3	3	3	3	-	25
18	Sinhgad Dental College & Hospital, Pune	3	3	3	3	3	3	3	3	3	27
19	Late YCMM Dental College, Ahmednagar	-	3	3	-	3	-	-	3	-	12
20	Saraswati Dhanwantari Dental College & Hospital, Parbhani	2	2	2	-	2	3	3	2	-	16
21	M.I.D.S. & Research (Dental College), Latur	-	3	3	3	3	-	-	3	-	15
22	VYWS Dental College, Amravati	-	2	-	2	-	-	-	-	-	4
23	SDKS Dental College, Hingna, Nagpur	3	3	3	3	3	3	3	3	-	24
24	SASS's Yogita Dental College, Ratnagiri	-	3	3	-	2	-	-	3	-	11
25	Aditya Dental College & hospital, Beed	-	2	3	-	2	-	-	3	-	10
	Total	57	86	79	66	76	43	56	86	6	555

Faculty:- Ayurved (PG Degree Courses)

Sr. No.	Name of College	Kaya-chikitsa	Kriya Sharir	Dravya gun Vigyana	Ras Shashtra & BK	Shalya Tantra	Prasuti Stri Roga	Rachana Sharir	Swasthavritta	Shakya Tantra	Agad Tantra Avum Vidhi Vaidyaka	Rog Nidan Vikrut Vigyana	Pancha-karma	Ayurved Siddant Darshan	Kaumarbhrya	Ayurved Samhita Siddhant	Sangyahrana	Chaya Avum Vikran Vigyan	Asthisandh & Marmagataroga	Total
1	R.A. Potdar Ayurved College, Mumbai	8	2	2	3	5	3	2	4	1	2	6	-	-	-	3	-	-	-	46
2	Shrimati K.G.M.P Ayurved Mahavidyalay, Mumbai	8	-	2	2	-	-	-	-	-	-	-	-	-	-	4	-	-	-	16
3	APM Ayurved Mahavidyalaya Sion, Mumbai	6	-	3	6	-	-	-	-	-	-	-	-	-	-	6	-	-	-	21
4	Dr. G. D. Pol Foundation's Y. M. T Ayurved College, Kharghar, Navi Mumbai	4	4	4	8	02+04	4	4	4	4	4	4	4	-	-	4	-	-	-	54
5	Ashtang Ayurved Mahavidyalay, Pune	-	-	-	-	-	3	3	-	-	-	-	-	-	-	3	-	-	-	9
6	Tiark Ayurved Mahavidyalay, Rasta Peth Pune	6	4	3	5	4	4	5	2	4	4	4	4	-	-	3	3	-	-	57
7	Dr. D. Y. Patil Ayurved College & Research Centre, Pimpri, Pune	4	6	-	6	4	4	6	6	-	-	6	2	-	-	6	-	-	-	48
8	PDEA's College of Ayurved, Nigdi Pradhikaran, Akurdi, Pune	6	6	2	6	6	2	6	6	6	6	2	-	-	-	6	-	-	-	68
9	B.S.D. Trust's Ayurved Mahavidyalaya Wagoli, Pune	3	-	-	-	-	-	3	-	-	-	-	-	-	-	3	-	-	-	9
10	Shree Saptashrungi Ayurved Mahavidyalaya, Nashik	6	-	6	6	-	-	-	-	6	-	6	-	-	-	6	6	-	-	42
11	S.M.B.T. Ayurved College & Hospital, Igatpuri, Nashik	6	-	-	-	6	6	6	-	6	-	6	-	-	-	6	4	-	-	40
12	MAM's Sumtibhai Shah Ayurved Mahavidyalaya, Hadapsar, Pune	6	6	6	6	6	6	6	6	6	6	6	6	-	-	6	-	-	-	78
13	Smt. K.C. Ajmera Ayu. Mahavidyalaya, Dhule	-	-	-	-	-	-	-	5	-	-	-	-	-	-	-	-	-	-	5
14	APM's S. C. Mutha Aaryangal Vaidak Mahavidyalay Satara	3	-	-	-	-	-	-	-	-	-	-	-	-	-	-	-	-	-	3
15	SYSPM's Yashwant Ayurved College, Kodoli,	6	6	6	6	6	6	6	6	6	6	6	6	-	-	6	6	-	-	90
16	LKR Ayurvedic Mahavidyalay, Gadhinglaj, Kolhapur	6	-	6	5	05+04	6	-	-	6	-	4	6	-	-	6	4	4	-	62
17	Hon. Shri. Annasaheb Dange Ayurved College, Astha, Sangli	6	5	-	5	5	6	6	-	6	-	6	3	-	-	5	6	5	-	64
18	Seth Govindji Raoji Ayurved Mahavidyalay, Solapur	5	-	-	-	-	-	-	-	-	-	-	-	-	-	-	-	-	-	5
19	L.R.P. Ayurvedic Medical College, Islampur, Sangli	5	-	6	6	5	5	-	6	6	6	6	6	-	-	6	6	3	78	
20	A. S. S. Ayurved Mahavidyalay, Panchavati, Nashik	5	-	-	-	4	-	-	-	-	-	1	-	-	-	-	-	-	-	10
21	P.M.T's Ayurved College, Ahmednagar	6	-	3	6	3	3	6	-	6	-	-	-	-	-	5	-	-	-	38
22	S.S.T's Ayurved Mahavidyalaya, Ahmednagar	5	-	-	-	-	5	-	-	5	-	-	-	-	-	-	-	-	-	15
23	S.V.N.H. T's Ayurved Mahavidyalaya, Rahur Dist - Ahmednagar	6	-	-	4	3	6	-	-	4	-	4	-	-	-	-	-	-	-	27
24	Siddhakala Ayurved College, Sangmner	2	-	-	-	2	2	4	-	-	-	6	-	-	-	2	6	-	-	24
25	Ashwin Rural Ayurved College, Manchi Hill, Anagar	6	-	-	6	6	-	-	-	-	-	-	-	-	-	-	-	-	-	18
26	C.S.M.S.S. Ayurved Mahavidyalaya, Aurangabad	6	-	6	-	6	6	6	-	6	6	6	6	-	-	6	6	-	-	60
27	Government Ayurved College, Osmanabad	-	5	5	4	6	5	6	-	3	-	-	-	-	-	5	-	-	-	39
28	Government Ayurved College, Nanded	4	6	2	2	6	2	3	2	5	-	6	-	-	-	6	2	-	-	46
29	Shri Ayurved Mahavidyalay, Nagpur	5	3	3	6	4	-	4	3	3	3	2	2	-	-	6	-	-	-	47
30	Government Ayurved College, Nagpur	6	6	-	6	6	-	6	6	6	6	6	-	-	-	6	-	-	-	60
31	Bhausaheb Mulak Ayurved Mahavidyalaya Nagpur	1	2	1	4	-	-	3	3	-	3	-	-	-	-	2	4	-	-	23
32	Vidharbh Ayurved Mahavidyalay, Amarvati	2	-	-	-	3	-	-	2	1	-	-	-	-	-	-	-	-	-	8
33	D.M.M. Ayurved Mahavidyalay, Yavatmal	3	-	-	-	-	-	-	-	-	-	3	-	-	-	-	-	-	-	6
34	M.S. Ayurvedic Medical College, Gondia	6	-	-	-	6	-	-	-	-	-	4	-	-	-	-	-	-	-	16
35	R.T. Ayurved Mahavidyalaya, Akola	3	-	-	-	3	-	2	-	-	-	-	-	-	-	2	-	-	-	10
36	Gramin Ayurved Mahavidyalaya, Patur, Akola	6	-	-	-	6	-	-	-	-	-	-	-	-	-	-	-	-	-	12
37	MCT's Late BV Kale Ayurved Medical College, Latur	-	-	-	-	-	-	4	-	-	-	-	-	-	-	-	-	-	-	4
	Total	166	61	66	108	126	86	92	55	84	60	78	74	0	66	99	28	6	3	1258



MAHARASHTRA UNIVERSITY OF HEALTH SCIENCES, NASHIK

Faculty :- Ayurved (PG Diploma Course)

Sr. No.	Name of College	Rasashastra & BK	Prsuti tantra Avam Stri Roga	Kshar Karma	Ayurvedic Pharmaceutics	Ayurved Cosmetology & skin Disease	Rognidan Vidhi	Netra Roga Vigyan	Total
1	MAM's Sumtibhai Shah Ayurved Mah. Hadapsar, Pune	5	5	-	-	-	-	-	10
2	S.V.N.H. T's Ayurved Mahavidyalaya, Rahuri Dist - Ahmednagar		5	5	2	5	2	2	21
Total		5	10	5	2	5	2	2	31

Faculty :-Unani (PG Degree Courses)

Sr. No.	Name of College	L imil Advia	Tahafuzi wa-samaji	Ilmul Qabalat -wa Amraz-e-Niswan	Tahafuzi -wa-samaji Tib	Moalejat	Ilmul Jarahat	Total
1	M.I...JT. Unani College, Mumbai	2	-	2	2	-	-	6
2	Z.V.M. Unani College, Pune	-	-	-	6	6	3	15
3	MTC Unani College, Malegaon	2	-	2	-	-	-	4
Total		4	0	4	8	6	3	25

Faculty :-Homoeopathy (PG Degree Courses)

Sr. No.	Name of College	H.M.M.	Organon of Medicine	Repertory	Practice of Medicine	Pediatrics	Psych-iatry	Homoeo-pathic Pharmacy	Total
		Dig	Dig	Dig	Dig	Dig	Dig	Dig	Dig
1	Dr. G. D. Pol Foundation's YMT Homoeopathy Medical College, Kharghar, Navi Mumbai	6	6	6	3	3	--	--	24
2	Dr. M.L. Dhawale Memorial Homoeopathy Institute, Palghar, Dist. Thane	6	6	6	6	6	6	--	36
3	MTES D.S. Homoeopathy Medical College, Pune	3	3	3	--	--	--	--	9
4	Dr.J.J. Magdum Homoeopathy Medical College, Jaysingpur, Dist. Kolhapur	6	6	6	--	--	--	--	18
5	J.P.E.S's Homoeopathy Medical College, Kolhapur	--	--	--	3	3	--	--	6
6	SNJB's Smt. K.B. Abad Homoeopathic Medical College, Chandwad, Dist. Nashik	3	3	3	--	--	--	--	9
7	Kakasaheb Mhaske Homoeopathic Medical College, Ahmednagar	6	6	6	--	--	--	--	18
8	D.K.M.M. Homoeopathic Medical College, Aurangabad	6	6	6	6	6	6	6	42
9	Foster Homoeopathic Medical College, Aurangabad	6	6	6	6	6	--	6	36
10	BSPM's Shri. Bhagwan Homoeopathy Medical College, Aurangabad	6	6	6	6	6	--	--	30
11	ASS's S.K. Homoeopathy Medical College, Beed	6	6	6	6	6	6	6	42
12	PHSPM's Panchsheel Homoeopathic Medical College, Khamgaon, Dist. Buldhana	3	3	3	3	3	--	--	15
13	P.D. Jain Homoeopathic Medical College, Parbhani	6	6	6	--	--	--	--	18
14	P.J.N.M.I. Homoeopathic Medical Sciences, Amravati	3	3	3	--	--	--	--	9
15	Smt. C.M. Patel Homoeopathic Medical College, Vile Parle, Mumbai	3	3	--	--	--	--	--	6
16	MTE, Dhobdumama sathe Homoeopathics Medical College, Pune	--	--	--	3	--	--	--	3
17	Dr. D.Y. Patil Homoeopathics Medical College, Pimpri, Pune	6	6	6	--	--	--	--	18
18	Motiwala Homoeopathic Medical College, Nashik	3	3	3	3	3	--	--	15
Total		78	78	75	45	42	18	18	354

Faculty :-Allied - Physiotherapy (PG Degree Courses)

Sr. No.	Name of College	Cardiovascular & Respiratory Sciences		Musculoskeletal Sciences		Neuro Sciences	Community Medical Sciences	Sport Physiotherapy	Total
1	* PT & Treatment Centre, LTMM College, Mumbai			10			--	--	10 As per Mumbai Univ. let. PG/1/181/1999 Dt.21/09/1999
2	* Physiotherapy School & Centre Seth G.S. Medical College, Mumbai			20			--	--	20 As per Mumbai Univ. let. PG/2/476/2004 Dt.23/02/2004
3	* Physiotherapy School & Centre, TN MC, Mumbai			10			--	--	10 As per Mumbai Univ. let. PG/1/181/1999 Dt.21/09/1999
4	* All India Institute of Physical Medicine & Rehabilitation, Mumbai	6	6	6	6	6	--	--	24
5	K.J. Somaiya College of Physiotherapy, Sion, Mumbai	--	8	2	--	--	--	--	10
6	TPCT,'s Terna Physiotherapy College, Mumbai	2	4	2	--	--	--	--	8
7	CMF's College of Physiotherapy, Pune	4	4	4	4	4	--	--	16
8	* Sancheti College of Physiotherapy, Pune	4	6	4	4	4	2	2	20
9	MME & RC's M. A. Rangoonwala college of Physiotherapy & Research, Pune	--	2	--	--	--	--	--	2
10	MAEER's Physiotherapy College , Talegaon Dabhade, Pune	--	2	2	2	2	--	--	6
11	Progressive Educaiton Socieyt's Modern College of Physiotherapy, Pune	2	4	4	2	--	--	--	12
12	D.E.S's Brijlal Jindal College of Physiotherapy, Pune	--	2	6	--	--	--	--	8
13	N.D.M.V.P. Samaj's College of Physiotherapy, Adagon, Nashik	--	2	--	--	--	--	--	2
14	Dr. Ulhas Patil College of Physiotherapy, Jalgaon	--	2	2	--	--	--	--	4
15	MIP College of Physiotherapy MIMSR MC, latur	--	2	--	--	--	--	--	2
16	Dr. V. V. Patil Foundation's College of Physiotherapy, Ahmednagar	2	2	2	2	2	--	--	8
17	PT School & Centre, Govt. Medical College, Nagpur	2	2	2	2	2	--	--	8
18	VSPM College of Physiotherapy, Nagpur	4	6	2	2	2	--	--	14
19	STE's Smt. Kashibai Navale College of Physiotherapy, Pune	2	2	4	2	2	--	--	10
Total		28	56	42	26	2			194

Faculty :- Allied -Occupational Therapy (PG Degree Courses)

Sr. No.	Name of College	Musculoskeletal Sciences	Neuro Sciences	Develop-mental Disabilities	Mental Health Sciences	Cardiovascular & Respiratory Medical Sciences	Community Medical Sciences	Total
1	O.T. Training School & Centre, LTMM College, Mumbai			5			--	05 As per Mumbai Univ. let. PG/ KK/9204/2003Dt.20/12/1973
2	Dept. of O.T. Therapy, Seth G.S. Medical College, Mumbai			20			--	20 As per Mumbai Univ. let. PG/2/476/2004 Dt.23/02/2004
3	O.T. School & Centre, TNMC, Mumbai			10			--	10 As per Mumbai Univ. let. PG/1/181/1999 Dt. 21/09/1999
4	All India Institute of Physical Medicine & Rehabilitation, Mumbai	6	6	6	--	--	--	18
5	OT School & Centre, Govt. Medical College, Nagpur	2	2	2	2	2	2	12
Total		8	8	8	2	2	2	65

* Intake Capacity related to Teachers students ratio is 1:2 as per University.



MAHARASHTRA UNIVERSITY OF HEALTH SCIENCES, NASHIK

Faculty :- Allied -MASLP (PG Degree Courses)

Sr. No.	Name of College	Audiology & Speech Language Pathology	Total
1	Ali Yawar Jung National Insti. for the Hearing Handicapped, Mumbai	20	20
2	Audiology & Speech Therapy School, TNMC, Mumbai	10 As RCI. let. -8 22/BASLP/92/RCI Dt. 27/09/2013	10
Total			30

Faculty :- Allied -MPO (PG Degree Courses)

Sr. No.	Name of College	Prosthetics and Orthotics	Total
1	All India Institute of Physical Medicine & Rehabilitation, Mumbai	4	4

Faculty :- Allied –Nursing (PG Degree Courses)

Sr. No.	Name of College	Midwifery & Obstetrics Nursing	Community Health Nursing	Medical Surgical Nursing	Pediatric Nursing	Psychiatric Nursing	Obstetrics & Gynecology	Medical Surgical Oncology	Total
1	College of Nursing Sir J.J. Group of Hospital , Byculla, Mumbai	--	5	5	5	5	5	--	25
2	Bombay Hospital College of Nursing, Mumbai	--	6	8	6	--	--	--	20
3	P.D. Hinduja National Hospital & Medical Research Centre, Mumbai	--	4	12	4	--	4	--	24
4	Terna Public Charitabal Trust's Terna Nursing Navi Mumbai	--	2	3	2	--	3	--	10
5	K.D.A Nursing College, Andheri (W), Mumbai	--	4	--	4	--	4	--	12
6	S.V.J.C.T. Samarth Nursing College, Dervan, Ratnagiri	--	--	4	--	--	4	--	8
7	Shirodkar Hospital Turst, Institute of Nursing Education, Thane	--	--	10	--	--	--	--	10
8	College of Nursing, Armed Forces Medical College, Pune	--	2	2	2	4	2	--	12
9	College of Nursing, Wanless Hospital, Miraj	--	5	5	--	--	5	--	15
10	Maharshi Karve Stree Shikshan Sanstha's Smt. Bakul Tambat Institute of Nursing Education, Karvenagar, Pune	--	--	5	--	3	2	--	10
11	Tahmi Grant Institute of Nursing Education, Grant Nursing Foundation, Pune	--	--	5	3	5	5	--	18
12	Sadhu Vaswani College of Nursing, Pune	--	4	4	--	--	6	--	14
13	Sinhagad Technical Education Society's Sinhagad College of Nursing, Ambegaon, Pune	--	5	5	5	5	5	--	25
14	M.V.P.S's Institute of Nursing Education, Adgaon. Nashik	--	--	--	4	--	5	--	9
15	Godavari Foundation's Godavari College of Nursing, Jalgaon	--	5	5	5	5	5	--	25
16	Shiva Trust Aurangabad College of Nursing, Aurgangabad	--	4	3	2	2	3	--	14
17	College of Nursing , Govt. Medical College, Nagpur	--	5	5	5	5	5	--	25
18	V.S.P.M.'s College of Nursing & Research Centre, Nagpur	--	--	5	5	5	5	--	20
19	K.H.S.'s Kasturba College of Nursing, Wardha	--	5	5	--	5	5	--	20
20	Indian Red Cross Society Bel Air College of Nursing, Panchgani, Mahableshwar, Satara	--	--	8	--	--	--	--	8
Total		--	56	99	52	44	73	--	324

D.M.L.T. (After B.Sc.)

Sr. No.	College Name and Address	Intake
1	Grant Medical College & Sir J. J. Group of Hospitals, Byculla, Mumbai- 400 008	12
2	Seth G. S. Medical College & King Edward VII Memorial Hospital, Parel, Mumbai	10
3	Topiwala National Medical College & B.Y.L. Nair Charitable Hospital, Mumbai	10
4	Lokmanya Tilak Municipal College, General Hospital, Sion, Mumbai- 400 022	10
5	K. J. Somaiya Medical College, Hospital & Research Centre, Sion Mumbai – 400 022	15
6	MAEER's M.I.M.E.R. Medical College, Talegaon Dabhade, Dist. – Pune – 410 507	10
7	B. J. Government Medical College, Dist. – Pune 411 001	16
8	Dwarikabai Sangamnerkar Foundation Nursing Home, Navi Peth, Dist. Pune – 411 030	06
9	Armed Forces Medical College, Solapur Road, Pune – 411 040.	30
10	Rajashri Chatrapati Shahu Maharaj, Govt. Medical College, Dist. – Kolhapur - 02	20
11	Dr. Vaishampayan Memorial Govt. Medical College, Solapur - 3	20
12	Government Medical College, Miraj, Dist. – Sangli - 410	12
13	College of PG DMLT Wanless Hospital Miraj	15
14	Dhanwantri D. M. L.T. College, Dhanwantri Campus, Kamthwada, Dist.-Nashik - 08	30
15	Shri. Bhausaheb Hire Govt. Medical College, (DMLT), Dist/ - Dhule – 424 001	30
16	Godavari Foundation's Dr. Ulhas patil Medical College & Hospital, N. H. No. 6, Bhusawal Road, Jalgaon-425 309	15
17	Maharashtra Institute of Medical Sciences & Research, DMLT College, Latur	12
18	Govt. Medical College, Dsit. - Aurangabad - 431 001	12
19	Govt. Medical College, Vazirabad, Nanded – 431 601.	20
20	S.R.T.R. Medical College, Ambajogai, Dist- Beed – 431 517.	06
21	Govt. Medical College, Ajani, Nagpur – 440 003.	12
22	Dr. Punjabrao alias Bhausaheb Deshmukh Memorial Medical college, Amravati	20
23	Govt. Medical College, Akola – 444 001.	20
Total		363

Colleges desirous to apply for starting new Post Graduate courses must have sufficient teaching staff and infrastructure like number of beds and technical staff as per respective council norms and also first batch of Under Graduate course must be passed out in all respect and college must be recognised by respective councils for degree course.

In respect of medical colleges, the college / institute which is not yet recognized by Medical Council of India for the award of M.B.B.S. degree, may apply for starting of a Post Graduate course in Pre-clinical and Para Clinical subjects of Anatomy, Physiology, Bio-chemistry, Pharmacology, Forensic Medicine and Community Medicine at the time of third renewal i.e. along with the admission of fourth batch M.B.B.S. course.



VIII) Excellence And Quality in Medical Education :

A) DEPARTMENTS FOR EXCELLENCE IN MEDICAL EDUCATION :

As mentioned in Third Perspective Plan for the year 2006-2011, the University has established following University departments of excellence, in the campus of the University and also in affiliated institute. Few courses / Certificate courses are run by these departments and they are as :

1) University Department of Interpathy Research and Technology (UDIRT, Nashik) :

- i) M.Sc. Pharmaceutical Medicine
- ii) Diploma in Ophthalmic Sciences & Diploma in Optometry

This department is established with an aim to achieve Inter-disciplinary Research, which will create better understanding between different systems of medicine.

2) Department of Infectious Diseases (Mumbai Regional Center, Mumbai) :

- i) Certificate Course for Infection Control and Hospital Administration
- ii) Certificate Course in introduction to Hospital Administration
- iii) Certificate Course in “Good Laboratory Practices”
- iv) Certificate Course in “Standardization of Drugs in Indian Traditional System of Medicine.”
- v) Certificate Course in Laboratory Diagnosis of Infectious Diseases and Management HIV Medicine
- vi) Fellowship in Drug Development.

3) Department of Genetics Immunology and Bio-Chemistry (Pune Regional Center, Pune) :

- i) Certificate Course in Medical Genetics
- Certificate Course in Reproductive Genetics

4) Department of Medical Education & Technology (MET) (Pune Regional Center, Pune)

Teachers Training Workshop conducted for all Medical faculty teachers.

5) Department of Community Ophthalmology (Aurangabad Regional Center, Aurangabad) :

- i) Paramedical Course in Ophthalmology

- a) Ophthalmic Assistant
- b) Optometry
- ii) Paramedical Course in Optometry (BPMT)
- 6) Department of Geriatrics (Aurangabad Regional Center, Aurangabad)
- 7) Department of Micro Dentistry (Govt. Dental College & Hospital, St. Georges Hospital, Mumbai)
- 8) Department of Tribal Health (Nagpur Regional Center, Nagpur)
Other departments can be considered in due course of time as per their necessity.
- 9) Department of Health Care Management (Pune Regional Center, Pune)
- 10) Dept. of Health Communication at Nashik
- 11) Dept. of Health Informatics at MUHS, Regional Centre, Pune

The Regional Centres of the University will be Strengthened in a phased manner, especially Nagpur & Kolhapur regional Centres will be strengthened by deploying essential man power, basic infrastructure etc.

* * * * *





MAHARASHTRA UNIVERSITY OF HEALTH SCIENCES, NASHIK

Ranking of Districts by Population Size Rest of Maharashtra

Annexure-1

Sr. No.	Districts	Population				% of population			Ranking order of Population		
				Estimated		Estimated			Estimated		
		2001	2011	2016	2021	2011	2016	2021	2011	2016	2021
1	Mumbai	3338031	3085411	2968782	2851845	2.74	2.45	2.15	9	11	13
2	Mumbai Upnagar (Sub-urban)	8640419	9356962	9745275	10132654	8.32	7.98	7.7	2	2	3
3	Thane	8131849	8070032	9522637	10976050	7.10	7.79	8.35	3	3	2
4	Palghar	--	2990116	3528336	4066557	2.70	2.88	3.1	11	9	9
5	Raigad	2207929	2634200	2888400	3142864	2.34	2.36	2.4	13	13	11
6	Sindhudurga	868825	849651	840304	830873	0.75	0.68	0.65	17	17	17
7	Ratnagiri	1696777	1615069	1576145	1537222	1.43	1.30	1.2	16	16	16
8	Pune	7232555	9429408	10861735	12293119	8.40	8.90	9.4	1	1	1
9	Satara	2808994	3003741	3107670	3211900	2.67	2.55	2.45	10	10	10
10	Sangli	2583524	2822143	2952526	3082909	2.50	2.40	2.35	12	12	12
11	Kolhapur	3523162	3876001	4067801	4263988	3.44	3.35	3.25	8	8	8
12	Solapur	3849543	4317756	4611363	4842795	3.85	3.77	3.65	6	6	7
13	Nashik	4993796	6107187	6788138	7469089	5.43	5.55	5.7	4	4	4
14	Dhule	1707947	2050862	2256768	2462675	1.82	1.85	1.9	14	14	14
15	Ahmednagar	4040642	4543159	4825743	5108327	4.05	3.95	3.7	5	5	5
16	Jalgaon	3682690	4229917	4544199	4858482	3.75	3.72	3.7	7	7	6
17	Nandurbar	1311709	1648295	1859771	2071247	1.46	1.52	1.6	15	15	15
Total		60618392	70629910	76945593	83202596	62.75	63.00	63.25			

Marathwada :

Sr. No.	Districts	Population				% of population			Ranking order of Population		
				Estimated		Estimated			Estimated		
		2001	2011	2016	2021	2011	2016	2021	2011	2016	2021
1	Aurangabad	2897013	3701282	4400084	4728757	3.30	3.6	3.7	1	1	1
2	Nanded	2876259	3361292	3644648	3928005	2.99	2.98	2.1	2	2	2
3	Beed	2161250	2585049	2830628	3091997	2.30	2.31	2.35	3	3	3
4	Latur	2080285	2454196	2674582	2895215	2.18	2.2	2.5	4	4	4
5	Parbhani	1527715	1836086	2036219	2206791	1.63	1.66	1.7	6	6	6
6	Hingoli	987160	1177345	1290723	1404219	1.05	1.05	1.07	8	8	8
7	Osmanabad	1486586	1657576	1752886	1848197	1.5	1.45	1.5	7	7	7
8	Jalna	1612980	1959046	2169251	2379457	1.75	1.75	1.7	5	5	5
Total		15629248	18731872	20799021	22482638	16.70	17.00	16.62			

Vidarbha

Sr. No.	Districts	Population				% of population			Ranking order of Population		
				Estimated		Estimated			Estimated		
		2001	2011	2016	2021	2011	2016	2021	2011	2016	2021
1	Nagpur	4067637	4653570	4988627	5323684	4.15	4.5	4.5	1	1	1
2	Wardha	1236736	1300774	1334464	1368154	1.15	1.05	1.1	8	8	9
3	Bhandara	1136146	1200334	1234303	1268152	1.1	1.01	0.98	9	10	10
4	Gondia	1200707	1322507	1397889	1456609	1.18	1.1	1.3	7	7	7
5	Gadchiroli	970294	1072942	1129700	1186459	0.95	0.9	0.9	11	11	11
6	Chandrapur	2071101	2204307	2275285	2346043	1.95	1.8	1.5	5	5	5
7	Amaravati	2607160	2888445	3044421	3200108	2.56	2.4	2.5	2	2	2
8	Yavatmal	2458271	2772348	2949501	3126654	2.46	2.4	2.5	3	3	3
9	Akola	1630239	1813906	1916028	2018333	1.65	1.5	1.5	6	6	6
10	Washim	1020216	1197160	1300953	1404747	1.1	1.06	1.1	10	9	8
11	Buldhana	2232480	2586258	2791348	2996179	2.3	2.28	2.25	4	4	4
Total		20630987	23012551	24362519	25695122	20.55	20.00	20.13			
Grant Total Population		9,68,78,627	112374333	122107133	131380356	100	100	100			

Region wise Percentage population

Annexure-2

Sr. No.	Development Board	No. of Districts in the Board	% to total population of State			Population Census		
			Year 2011	Estimated		Year 2011	Estimated	
				Year 2016	Year 2021		Year 2016	Year 2021
1	Rest of Maharashtra	17	62.75	63.00	63.25	70629910	76945593	83202596
2	Marathwada	08	16.70	17.00	16.62	18731872	20799021	22482638
3	Vidarbha	11	20.55	20.00	20.13	23012551	24362519	25695122
Total		36	100.00	100.00	100.00	112374333	122107133	131380356

Municipal Corporation Population

Annexure-3

Sr. No.	Municipal Corporation	Districts	2011	2016*	2016* (including population of circumference of 30 km from the corporation area)	2016* Rest of District Population (District Population - Municipal Corporation Population)
1	<u>Mumbai</u>	<u>Mumbai City District, Mumbai Suburban District</u>	12442373	12714057	12714057	Not Applicable
2	<u>Mira-Bhayandar</u>	<u>Thane</u>	520301	560832	560832	Not Applicable
3	<u>Thane</u>	<u>Thane</u>	1261517	1359789	1359789	Not Applicable
4	<u>Navi Mumbai</u>	<u>Thane, Raigad District</u>	703947	739672	739672	Not Applicable
5	<u>Kalyan-Dombivli</u>	<u>Thane</u>	1193266	1286221	1286221	Not Applicable
6	<u>Ulhasnagar</u>	<u>Thane</u>	472943	509785	509785	Not Applicable
7	<u>Bhiwandi-Nizampur</u>	<u>Thane</u>	598703	645339	645339	Not Applicable
8	<u>Vasai-Virar</u>	<u>Palghar</u>	469526	483048	483048	Not Applicable
9	<u>Pune</u>	<u>Pune</u>	3115431	3392704	4004335	4879686
10	<u>Pimpri-Chinchwad</u>	<u>Pune</u>	1727692	1881456	1977714	
11	<u>Nagpur</u>	<u>Nagpur</u>	2405421	2513664	2755862	2232765
12	<u>Aurangabad</u>	<u>Aurangabad</u>	1309106	1356233	1771491	2628593
13	<u>Nashik</u>	<u>Nashik</u>	1486973	1569500	1838938	3977688
14	<u>Malegaon</u>	<u>Nashik</u>	471006	497146	971512	
15	<u>Amravati</u>	<u>Amravati</u>	646801	662324	803594	2240827
16	<u>Solapur</u>	<u>Solapur</u>	1300511	1349540	1455334	3156029
17	<u>Kolhapur</u>	<u>Kolhapur</u>	549283	567683	1056160	3011641
18	<u>Sangli-Miraj & Kupwad</u>	<u>Sangli</u>	502697	514761	926549	2025977
19	<u>Ahmednagar</u>	<u>Ahmednagar</u>	350905	364765	697950	4127793
20	<u>Jalgaon</u>	<u>Jalgaon</u>	780468	809501	1025314	3518885
21	<u>Dhule</u>	<u>Dhule</u>	376093	383050	848146	1408622
22	<u>Nanded-Waghala</u>	<u>Nanded</u>	550439	566842	735641	2909007
23	<u>Latur</u>	<u>Latur</u>	382754	391174	691900	1982682
24	<u>Parbhani</u>	<u>Parbhani</u>	307191	312290	542930	1493389
25	<u>Akola</u>	<u>Akola</u>	427146	433553	582916	1333112
26	<u>Chandrapur</u>	<u>Chandrapur</u>	321036	326814	488199	1787086

* Approximate Population calculated as per the growth rate of previous 2 census i.e. 2001 & 2011



Region wise Population density per Sq.Km.

Annexure-4

Rest of Maharashtra

Sr. No.	Districts	Area in Sq. Km.	Population density per Sq. Km.	Sr. No.	Districts	Area in Sq. Km.	Population density per Sq. Km.
			2011				
1	Mumbai City	157	19652	10	Sangli	8572	329
2	Mumbai Upnagar	446	20980	11	Kolhapur	7685	504
3	Thane	4214	1157	12	Solapur	14895	290
4	Palghar	5344	560	13	Nashik	15530	393
5	Raigarh	7152	368	14	Dhule	8095	285
6	Sindhudurga	5207	163	15	Ahmednagar	17048	266
7	Ratnagiri	8208	197	16	Jalgaon	11765	360
8	Pune	15643	603	17	Nandurbar	5055	277
9	Satara	10480	287	Average density for Rest of Maharashtra excluding Mumbai & Thane, Palghar		145496	46671

Marathwada

Sr. No.	Districts	Area in Sq.Km.	Population density per Sq.Km.
			2011
1	Aurangabad	10100	366
2	Nanded	10422	319
3	Beed	10439	242
4	Latur	7372	343
5	Parbhani	6251	295
6	Hingoli	4526	244
7	Osmanabad	7512	219
8	Jalna	7612	254
Average density for Marathwada		64234	2282

Vidarbha

Sr. No.	Districts	Area in Sq.Km.	Population density per Sq.Km.
			2011
1	Nagpur	9892	470
2	Wardha	6309	206
3	Bhandara	3890	294
4	Gondia	5431	253
5	Gadchiroli	14412	74
6	Chandrapur	11443	193
7	Amaravati	12210	237
8	Yavatmal	13582	204
9	Akola	5429	320
10	Washim	5155	244
11	Buldhana	9661	268
Average density for Vidarbha		97414	2763

Table No. - 01

MAHARASHTRA UNIVERSITY OF HEALTH SCIENCES, NASHIK

List of affiliated colleges

Medical

As on date. :- 30/06/2016

Sr. No.	Districts	Sr. No.	Name of the College	Aided / Non Aided	Intake
Rest of Maharashtra					
1	Mumbai	1	Grant Medical College, Seth J.J. Compound Byculla, Mumbai	Govt.	200
		2	Seth G.S. Medical College & KEM Hospital, Parel, Mumbai	Mumbai Corp.	180
		3	Topiwala National Medical College, Mumbai Central, Mumbai	Mumbai Corp.	120
		4	Lokmanya Tilak Medical College, Sion (W), Mumbai	Mumbai Corp.	100
		5	K. J. Somaiya Medical College, Sion, Mumbai	Private (Unaided)	50
		6	Municipal Corporation of Greater Mumbai's Dr. R. N. Cooper Municipal General Hospital & Medical College, Juhu, Ville Parle (W) Mumbai	Mumbai Corp.	150
		Navi Mumbai	7	Terna Medical College, Nerul, Navi Mumbai	Private(Unaided)
2	Thane	8	Rajiv Gandhi Medical College, Kalwa, Thane	Thane Corp.	60
3	Ratnagiri	9	SVJCT Mumbai's B.K.L. Walawalkar Rural Medical College, At. Post. Sawarda, Tal. Chiplun, Dist. Ratnagiri	Private(Unaided)	100
4	Pune	10	B. J. Medical College, Sassoon Hospital Compound, Pune	Govt.	200
		11	MAEER MIT's MIMER Medical College, Talegaon-Dabhade, Tal. Maval, Pune	Private (Unaided)	150
		12	Armed Force Medical College, Pune	Central Govt.	140
		13	Sinhgad Technical Edu. Society's Smt. Kashibai Navale Med Colle. & General Hosp., Narhe, Ambegaon, Pune	Private (Unaided)	150
5	Satara	14	Shri Chhatrapati Shivaji Education Society's Institute of Medical Sciences & Research, Mayani, Tal-Khatav, Dist. Satara	Private (Unaided)	100
6	Sangli	15	Govt. Medical College, Miraj, Sangli	Govt.	150
7	Kolhapur	16	Rajashree Chhatrapati Shahu Maharaj Govt. Medical College, Kolhapur	Govt.	150
		17	Dr. Vaishampayan Memorial Govt. Medical College, Solapur	Govt.	150
8	Solapur	18	M.M. Charitable Trust's Ashwini Rural Medical College Hospital & Research Centre, At/Po. Kumbhari, Tal. & Dist. Solapur	Private (Unaided)	100
		19	Dr. Vasantao Pawar Medical College, Hospital & Research Centre, Adgaon naka, Nashik	Private (Unaided)	120
9	Nashik	20	Sau. Mathurabai Bhausaheb Thorat Sevabhavi Trust, Ahmednagar's S.M.B.T. Institute of medical Sciences & Research Centre, Nandihill, Dhamangaon-Ghoti, Tal. Igatpuri, Dist. Nashik	Private (Unaided)	150
		21	Shree BH Govt. Medical College, Chakkar Bardi, Dhule	Govt.	100
10	Dhule	22	JMF's A.C.P.M. Medical College, Sakri Road, Dhule	Private (Unaided)	100
		23	Dr. V.V. Patil Foundations Medical College, vadgaon gupta, M.I.D.C. A'nagar.	Private (Unaided)	150
11	Ahmednagar	24	Godavari Foundation's Dr. Ulhas Patil Medical College & Hospital, Jalgaon Khurd, Tal. & Dist. Jalgaon	Private (Unaided)	150
Total					3120
Marathwada					
13	Aurangabad	25	Govt. Medical College Aurangabad	Govt.	150
14	Nanded	26	Dr. Shankarrao chavan Govt Medical College, Vazirabad, Nanded	Govt.	100
15	Beed	27	S.R.T.Rural Medical College, Ambejogai, Beed	Govt.	100
		28	MIEMR Medical College & Research, Latur	Private (Unaided)	100
16	Latur	29	Govt. Medical College, Latur	Govt.	150
		30	JIU's Indian Institute of Medical Sciences & Research, At. Warudi, Po. Gevrai Bazar, Tal. Badnapur, Dist. Jalna	Private (Unaided) (Minority)	100
Total					700



MAHARASHTRA UNIVERSITY OF HEALTH SCIENCES, NASHIK

Vidarbha					
18	Nagpur	31	Govt. Medical College, Nagpur	Govt.	200
		32	Indira Gandhi Govt. Medical College, Nagpur	Govt.	150
		33	N.K.P. Salve Institute of Medical Sciences & Research Centre, Lata Mangeshkar Hospital, Nagpur	Private(Unaided)	150
19	Wardha	34	Mahatma Gandhi Institute of Medical Sciences, Sevagram, wardha	Central Govt. Aided	100
20	Chandrapur	35	Government Medical College, T.B. Hospital Campus, Ramnagar, Chandrapur, Dist. Chandrapur	Govt.	100
21	Amravati	36	Dr. Punjabrao Deshmukh Memorial Medical College, Amravati	Private (Unaided)	100
22	Akola	37	Govt. Medical College, Akola	Govt.	150
23	Yavatmal	38	S V Naik Govt. Medical College, Yavatmal	Govt.	150
Total					1100
Grand Total					4920

Dental

Table No. - 02

Sr. No.	Districts	Sr. No.	Name of the College	Aided / Non Aided	Intake
Rest of Maharashtra					
1	Mumbai	1	Govt. Dental College, Mumbai	Govt.	100
		2	Nair Hospital Dental College, Mumbai Central, Mumbai	Corp.	60
	Navi Mumbai	3	YMT Dental College, Kharghar, Navi Mumbai	Non Aided	100
		4	MGM Dental College, Kamothe, Navi Mumbai	Non Aided	100
		5	Terna Dental College, Nerul, Navi Mumbai	Non Aided	100
2	Thane	6	Shaan Edu. Society, Pune's Guardian College of Dental Sciences & Res. Centre, Chikhloli, Ambar Nath, Thane	Non Aided (Minority)	100
3	Ratnagiri	7	Shivtej Arogya Seva Sanstha's Yogita Dental College & Hospital, Khed, Dist. Ratnagiri	Non Aided	100
4	Pune	8	MCE Society's M.A. Rangoonwala College of Dental Sciences & Research Centre, Pune	Non Aided (Minority)	100
		9	Sinhgad Dental College & Hospital, Vadgaon (BK), Pune	Non Aided	100
		10	Pd. Dr. D. Y. Patil Vidyapeeth Deemed University Trust, D. Y. Patil Vidyannagar, Nerul, Navi Mumbai's D. Y. Patil Dental School, Charholi (Bk.) Via Lohegaon, Pune	Non Aided	100
5	Sangli	11	Vasantdada Patil Dental College, Kavalpur, Tal. Miraj, Sangli	Non Aided	40
6	Kolhapur	12	Tatyasaheb Kore Dental College & Research Centre, New Pargaon, Hatkanangle, Kolhapur	Non Aided	60
7	Solapur	13	P.D.Upadhyay Dental College, Kegaon, Solapur	Non Aided	100
8	Nashik	14	MGV's Karmaveer Bhausaheb Hire Dental College, Panchavati, Nashik	Non Aided	100
9	Dhule	15	JMF's ACPM Dental College, Sakri Road, Dhule	Non Aided	100
10	Ahmednagar	16	SMBT's SMBT Dental College & Hospital, Sangamner, A'nagar	Non Aided	100
		17	Late Shri. Yashwantrao Chavan memorial Medical & Rural Development Foundation's Dental College, A'nagar	Non Aided	100
Total					1560
Marathwada					
11	Aurangabad	18	Govt. Dental College, Panchakki Rd, Aurangabad	Govt.	50
		19	CSMSS Dental College, Kanchanwadi Pai than Road, A'bad	Non Aided	100
12	Beed	20	Aditya Dental College, Sarda Estate, Pimpalnare, Beed	Non Aided	100
13	Nanded	21	Shri Gurudatta Pratishthan, Nanded's Nanded Rural Dental College & Research Centre, At. Po. Pangri Village, Tal. Dist. Nanded	Non Aided	100
14	Latur	22	Maharashtra Institute of Dental Sciences & Research Dental College, Vishwanath puram, Ambejogai Road, Latur	Non Aided	100
15	Parbhani	23	Saraswati Dhanwantari Dental College & Hospital, Parbhani	Non Aided	100

16	Hingoli	24	Dr. Hedgewar Smruti Rugna Seva Mandal's Dental College, Basamba Phata, Akola Road, Hingoli	Non Aided	50
Total					600
Vidarbha					
17	Nagpur	25	Govt. Dental College, Medical square, Nagpur	Govt.	50
		26	VSPM's Dental College & Research Centre, Dighoh Hills, Hingna Road, Nagpur	Non Aided	100
		27	Swargiya Dadasaheb Kalmegh, Smruti Dental College, Wanadongri Rd., Hingana, Dist. Nagpur	Non Aided	100
18	Amravati	28	VYWS Dental College, Tapovan-Wadali Road Camp, Amravati	Non Aided	50
19	Akola	29	Sakshi Shikshan Krida Prasarak and Bahuddeshiya Sanstha, Murtizaur, Tal. Murtizapur, Dist. Akola's Dr. Rajesh Ramdasji Kamble Dental College & Hospital, At. Po. Kanheri (Sarap), Tal. Barshitakli, Dist. Akola.	Private (Unaided)	100
Total					400
Grand Total					2560

Ayurved

Table No. - 03

Sr. No.	Districts	Sr. No.	Name of the College	Aided / Non Aided	Intake
Rest of Maharashtra					
1	Mumbai	1	R.A. Podar Ayurved Mahavidyalaya, Worili, Mumbai	Govt.	100
		2	Smt. K.G. Mital Punarvasu Ayurvedic Mahavidyalaya, Charni Road (W), Mumbai	Aided (Minority)	50
		3	Ayurved Vidya Prasarak Mandal's Ayurved Mahavidyalaya, Sion (E), Mumbai	Aided	60
	Navi Mumbai	4	YMT Ayur. Mahavidyalaya, Kharghar, Navi Mumbai	Non-Aided	100
2	Palghar	5	Shri. N.K.D. Charitable Trust's Nalasopara Ayurved College, Nalasopara(E), Tal. Vasai, Palghar	Non-Aided	60
3	Sindhudurga	6	Bhaisaheb Sawant Ayurved Mahavidyalaya, Kaskilwada, Sawantwadi, Dist. Sindhudurga	Aided	40
4	Ratnagiri	7	Maharashtra Education Society Pune's Ayurved Mahavidyalaya, Ghanekhunt-Lote, Khed, Ratnagiri	Non-Aided	50
5	Pune	8	Ashtang Ayurved Mahavidyalaya, Vijanagar Colony, Pune	Aided	40
		9	Tilak Ayurved Mahavidyalaya, Rasta Peth, Pune	Aided	100
		10	Dr. DY Patil Ayurved College, Pimpri, Pune	Non-Aided	100
		11	P.D.E.A's College of Ayur. & Research Centre, Nigadi, Pune	Non-Aided	60
		12	B.S.D. Trust's Ayurved Mahavidyalaya, A/p. Wagholi, Tal. Haveli, Pune	Non-Aided	60
		13	Sumatibhai Shah Ayur. Mahavidyalaya, Malwadi, Hadapsar, Pune	Non-Aided	60
6	Satara	14	S.C.Mutha Aryangla Vaidyak College, Gendamal, Satara	Aided	50
		15	Rural Ayurved Mahavidyalay & Research Centre, Mayani, Tal. Khatav, Dist. Satara.	Non-Aided	50
7	Sangli	16	Vasnatdada Patil Ayurved Mahavidyalaya & Inst. of Yoga, South Shivaj Nagar, Sangli-Miraj Road, Sangli	Aided	40
		17	Annasaheb Dange Ayurved Mahavidyalaya, Ashta, Sangli	Non-Aided	60
		18	Loknete Rajaram Babu Patil Ayurved College, Uran- Islampur, Walwa, Sangli	Non-Aided	60
8	Kolhapur	19	Hanuman Shikshan Prasarak Mandal's Ayur. Medical College, Peth Vadgaon, Hatkangale, Kolhapur	Non-Aided	50
		20	Yeshwant Ayurvedic College, A/P. Kodoli, Panhala, Kolhapur	Non-Aided	100
		21	LKR Ayurved Medical College, Tal. Gadhinglaj, Dist. Kolhapur	Non-Aided	60
		22	Dr. J.J. Magdum Ayur. Med. College, Jaysingpur, Tal. Shirol, Dist. Kolhapur	Non-Aided	60
9	Solapur	23	Seth Govindaji Raoji Ayur. Mahavidyalaya, Solapur	Aided (Minority)	50
10	Nashik	24	ASS Ayurved Mahavidyalaya, Ganesh Wadi, Panchwati, Nashik	Aided	60
		25	SSS Ayurved Mahavidyalaya, Hirawadi, Nashik	Non-Aided	60



MAHARASHTRA UNIVERSITY OF HEALTH SCIENCES, NASHIK

	Nashik	26	S.M.B.T. Ayurved College & Hospital, Nandihills, Dhamangaon, Tal. Igatpuri, Dist. Nashik	Non-Aided	60
		27	Jagdamba Education Society, Yeola's Matoshri Asarabai Dabhade Ayurved College, at babhulgaon, Tal. Yeola, Dist. Nashik	Non-Aided	50
11	Ahmednagar	28	Gangadhar Shastri Gune Ayur. Mahavidyalaya, Vishrambag A'nagar	Non-Aided	50
		29	PMT's Ayurved College, Shevgaon, A'nagar	Non-Aided	80
		30	VNH Ayurved College, Rahuri, A'nagar	Aided	60
		31	SST's Ayurved Medical College, Sangamner, A'nagar	Aided	60
		32	Sidhakala Ayurved Mahavidyalaya, Sangamner, A'nagar	Non-Aided	60
		33	Ashwin Rural Ayur. Mahavidyalaya, Sangamner, A'nagar	Non-Aided	40
12	Dhule	34	K. C. Ajamera Ayurved Mahavidyalaya, Deopur, Dhule	Non-Aided	60
		35	D.S.Naik Ayurved Mahavidyalaya, Nagaon, Dhule	Non-Aided	40
		36	KVTR Ayurved Mahavidyalaya, Boradi, Tal-Shirpur, Dhule	Non-Aided	30
13	Jalgaon	37	KDMG's Ayurved Medical College, Chalisgaon, Jalgaon	Non-Aided	50
		38	Chaitanya Ayurved Mahavidyalaya, Sakegaon, Tal-Bhusawal, Jalgaon	Non-Aided	50
Total					2270

Ayurved

Sr. No.	Districts	Sr. No.	Name of the College	Aided / Non Aided	Intake
Marathwada					
14	Aurangabad	39	C.S.M.S.S. Ayurved Mahavidyalaya & Rugnalaya, Kanchanwadi, A'bad	Non-Aided	100
		40	Shiva Trust Aurangabad's Yashwantrao Chavan Ayurvedic Medical College & Hospital, at Nipani-Bhalgaon, Beed Highway, Tal. & Dist. Aurangbad	Non-Aided	100
15	Hingoli	41	Shri Dhaneshwari Manav Vikas Mandal, A'bad's Sau. Shantadevi Vedprakash Patil Ayurved College & Research Institute, at Hatta, Tal. Basmat, Dist. Hingoli	Non-Aided	50
16	Osmanabad	42	Govt. Ayurved Mahavidyalaya, Madhuban, Osmanabad	Govt.	50
17	Parbhani	43	Ramrao Patil Ayurved Mahavidyalaya & Rugnalaya, Purna, Parbhani	Non-Aided	40
18	Latur	44	Dhanwantari Ayurved College, Udgir, Latur	Non-Aided	60
		45	Manjara Charitable Trust's Ayur. Maha. & Hospital, Latur	Non-Aided	60
19	Nanded	46	Govt. Ayurved Mahavidyalaya, Vajirabad, Nanded	Govt.	100
20	Beed	47	Aditya Bahuuddeshiya Sanstha's Ayurved college & Research Centre, Beed	Non-Aided	50
Total					610
Vidharbha					
21	Nagpur	48	Govt. Ayurved Mahavidyalaya, Sakkardora Square, Nagpur	Govt.	100
		49	Bhauasaheb Mulak Ayurved Mahavidyalaya & Medical Sciences, Nandanvan, Nagpur	Non-Aided	60
		50	Shri Ayurved Mahavidyalaya, Nagpur	Aided	70
		51	Jupiter Ayurved Medical College, Shankarpur, Nagpur	Non-Aided	40
		52	Sanmarg Shikshan Sanstha's Shri. K.R. Pandav Ayurved College & Hospital, Bahadura, Nagpur	Non-Aided	60
22	Gondia	53	MS Ayurved Mahavidyalaya, Kudwa, Gondia	Non-Aided	60
23	Chandrapur	54	Gurukrupa Shikshan Prasarak Mandal's Smt. Vimladevi Ayur. Medi. Colle. & Hosp., At. Po. Tadali, Village Wandhari, Dist. Chandrapur	Non-Aided	50
24	Amravati	55	Vidarbha Ayurved Mahavidyalaya, Amravati	Aided	50
		56	Shri Gurudeo Ayurved College, Gurukunj Ashram, Mozari	Aided	50

25	Yavatmal	57	D.M.M. Ayurved Mahavidyalaya, Yavatmal	Aided	50
		58	Ayurved Mahavidyalaya, Pusad , Yavatmal	Non-Aided	50
26	Akola	59	Radhakrishna Toshniwal Ayurved Mahavidyalaya, Akola	Aided	50
		60	Gramin Ayurved Mahavidyalaya, Patur, Akola	Non-Aided	50
27	Buldhana	61	S. R. Chunawale Ayurved Mahavidyalaya, Chikhali, Buldhana	Non-Aided	60
		62	Anandi Shikshan Prasarak Mandal Nagpur's Ayurved College, Hospital & Research Institute, Sagwan, Buldhana	Non-Aided	60
28	Washim	63	Ayurvedic College, Hospital & Research Centre, Degaon, Tal. Risod, Dist. Washim	Non-Aided	50
Total					910
GRANT TOTAL					3790

Unani

Table No. - 04

Sr. No	Districts	Sr. No	Name of the College	Aided / Non Aided	Intake
Rest of Maharashtra					
1	Mumbai Upnagar	1	Dr. M.I. Jamkhanwala Tibbia College & Hospital, Varsova, Andheri, Mumbai	Aided (Minority)	60
2	Pune	2	Z. V. M. Unani Medical College, Pune	Aided (Minority)	60
3	Nashik	3	M.T.C. Unani Medical College, MAnsoora, Malegaon, Nashik	Aided (Minority)	60
4	Jalgaon	4	Iqra Unani Medical College, Mohadi bShivar, Jalgaon	Non Aided (Minority)	50
5	Nandurbar	5	Ahmed Garib Unani Medical College, Akalkuwa, Nandurbar	Non Aided (Minority)	60
Total					290
Marathwada					
6	Aurangabad	6	Yunus Fazlani Unani Medical College & Al Fazlani Hospital, Kunjkheds, Tal. Kannad, Dist. A'bad	Non Aided	50
Grand Total -					340

Homoeopathy

Table No. - 05

Sr. No.	Districts	Sr. No	Name of the College	Aided / Non Aided	Intake
Rest of Maharashtra					
1	Mumbai / Navi Mumabai	1	Y.M.T. Homoeopathy College, Kharghar, Navi Mumbai	Non Aided	100
2	Mumbai Upnagar	2	Smt. C.M. Patel Homoeopathy College, Vile Parle (W), Mumbai	Non Aided	100
3	Palghar	3	Virar Homoeopathic Medical College, Vir Savarkar Marg, Virar (E), Tal. Vasai, Dist. Palghar	Non Aided	100
4	Thane	4	Janseva Mandal Trust's, Sai Homo. Medical College Dugad Phata, Bhivandi. Dist. Thane.	Non Aided	50
5	Raigad	5	C.H. Keluskar Homoeopathy College, Alibag, Raigad	Non Aided	50
6	Sindhudurg	6	KES Vengurla Homoeopathy College, Vengurla, Sindhudurga	Non Aided	50
7	Ratnagiri	7	Dapoli Homoeopathy College, Talsure, Dapoli, Ratnagiri	Non Aided	50
8	Pune	8	D. S. Homoeopathy College, Pune	Non Aided	100
		9	L.M.F. Homoeopathy College, Chinchwad, Pune	Non Aided	100
		10	Dr. D.Y. Patil Homoeopathy College, Pimpri, Pune	Non Aided	100
		11	Anantrao Kanse Homoeopathy College, Alephata, Junnar, Pune	Non Aided	50
9	Satara	12	Savkar Homoe. College & Samarth Hospital, Satara	Non Aided	100
10	Sangali	13	Gulabrao Patil Homoeopathy College, Miraj, Sangali	Non Aided	100



MAHARASHTRA UNIVERSITY OF HEALTH SCIENCES, NASHIK

11	Kolhapur	14	Dr. J.J. Magdum Homoeopathy College, Jaisinghpur, Shirol, Kolhapur	Non Aided	100
		15	SJPE. Homoeopathy College, Kolhapur	Non Aided	75
		16	Venutai Chavan Homoeopathy College, Kolhapur	Non Aided	50
		17	E.B. Gadkari Homoeopathy College, Gadhinglaj, Kolhapur	Non Aided	50
12	Solapur	18	Gandhi Natha Rangaji Homoeopathy College, Balives, Solapur	Non Aided	50
		19	P.S.P.M. Mahila Homoeopathy College, Mijarewadi, Solapur	Non Aided	50
13	Nashik	20	Motiwala National Homoeopathy College, Gangapur, Nashik	Non Aided	100
		21	Smt. K.B. Abad Homoeopathy College, Chandwad, Dist. Nashik	Non Aided (Minority)	100
		22	Dhanwantri Homoeopathy College, Kamathwade, Nashik	Non Aided	75
14	Ahmenagar	23	Ahmednagar Homoeopathy College, Savedi, Ahmednagar	Non Aided	50
		24	Kakasaheb Mhaske Homoeopathy College, Nagapur, A'nagar	Non Aided	100
		25	M.H.F's Homoeopathy College, Sangamner, A'nagar	Non Aided	100
		26	Vamanrao Ithape Homoeopathy College, Sangamner, A'nagar	Non Aided	100
		27	Shiva Trust Aurangabad's Sharadchandraji Pawar Homoeopathy Medical College & Hospital at Post Wadala Mahadev, Tal. Shrirampur, Dist. Ahmednagar	Non Aided	100
15	Dhule	28	K.D.M.G's Homoeopathy College, Shirpur, Dhule	Non Aided	75
16	Jalgaon	29	Shri Chamundamata Homoeopathy College, Chincholi, Jalgaon	Non Aided	50
		30	Godavari Foundation's Dr. Ulhas Patil Homoeopathic Medical College, Jalgaon (Kh.), Tal. Dist. Jalgaon	Non Aided	50
Total					2325
Marathwada					
17	A'bad	31	D.K.M.M. Homoeopathy College, Aurangabad	Non Aided (Minority)	100
		32	Foster Development's Homoe. College, CIDCO, A'bad	Non Aided	100
		33	Shri Bahagwan Homoeopathy College, Aurangabad	Non Aided	100
18	Beed	34	Sonajirao Kshirsagar Homoeopathy College, Vidyanagar (W), Beed	Non Aided	100
19	Latur	35	K.S.P.M. Homoeopathy College, Latur	Non Aided	75
20	Parbhani	36	P.D. Jain Homoeopathy College, Parbhani	Non Aided	50
21	Nanded	37	Baliraja Shikshan Prasarak Mandal's Hon'ble Shyamraoji Kadam Homoeopathic Medical College, CIDCO, New Nanded	Non Aided	50
22	Jalna	38	Om Shanti Bahuuddeshiya Shikshan Sanstha A'bad's Guru Mishri Homo. Medical College & Hospi. Tal. Badnapur, Dist. Jalna	Non Aided (Minority)	50
Total					625
Vidarbha					
23	Nagpur	39	Antarbharati Homoeopathy College, Dhaba, Nagpur	Non Aided	50
24	Gondia	40	Gondia Homoeopathy College, Suryatola, Gondia	Non Aided	50
25	Chandrapur	41	Purushottam Das Bagla Homoe. College, Arwat, Chandrapur	Non Aided	50
26	Amravati	42	P.J.N. Memorial Institute of Homoe., Medical Sciences, Amravati	Non Aided	70
		43	T.S. Homoeopathy College, Rajapeth, Amravati	Non Aided	75
27	Akola	44	Shri Janta Homoeopathy College, Akola	Non Aided	50
		45	H.E.S. Homoeopathy College, Akot Rd., Akola	Non Aided	50
28	Buldhana	46	Panchasheel Homoeopathy College, Khamgaon, Buldhana	Non Aided	100
Total					495
GRAND TOTAL					3445

Table No. - 06

Basic B.Sc. Nursing & P.B.B.Sc. Nursing Colleges

Sr. No.	Districts	Sr. No.	Name of the College	Aided / Non Aided	Courses Offered	
					Basic B.Sc. Nursing	P.B.B.Sc. Nursing
					Intake	
Rest of Maharashtra						
1	Mumbai	1	Institute of Nursing Education, Sir J.J. Group of Hospital, Byculla, Mumbai	Govt.	50	30
		2	Jaslok College of Nursing, Mumbai	Non Aided	25	--
		3	Bombay Hospital College of Nursing, Bombay Hospital Trust, Mumbai	Non Aided	50	--
		4	School of Nursing, INHS Asvini's College of Nursing INHS Asvini, Colaba, Mumbai	Central govt.	50	--
		5	Sir H.N. Hospital & Research College of Nursing, Shivadi, Mumbai	Non Aided	30	--
		6	Dr. Balabhai Nanavati Hospital's College of Nursing Dr. Balabhai Nanavati Hospital, Vileparle(W), Mumbai	Non Aided	40	--
		7	K.J. Somaiya College of Nursing, Sion (E), Mumbai	Non Aided	40	--
		8	Seva Mandal Education Society's College of Nursing, R.A. Kidwai Road, Matunga, Mumbai	Non Aided (Minority)	40	--
	Navi Mumbai	9	Terna Public Charitable Trust's, Terna Nursing College, Nerul, Navi Mumbai	Non Aided	50	--
		10	M.G.M. Trust's College of Nursing, Vashi, Navi Mumbai	Non Aided	30	--
2	Mumbai Upnagar	11	Holy Spirit Institute of Nursing Education, Holy spirit Hospital, Mahakali caves Road, Andhari (E), Mumbai.	Non Aided (Minority)	30	20
		12	College of Nursing, P.D. Hinduja National Hospital & Medical Res. Centre Andheri (E) Mumbai	Non Aided	30	--
		13	Fortis Institute of Nursing Mulund Goregaon Link Road, Bhandup (W), Mumbai	Non Aided	50	30
		14	Malti Vasant Trust's KDA Nursing College, Andheri (W), Mumbai	Non Aided	50	30
		15	Dr. L.H. Hiranandani Hospital, Powai, Mumbai's Hiranandani College of Nursing Powai, Mumbai	Non Aided	45	40
		16	The Bandra Holy Family Hospital Society's Holy Family Institute of Nursing Education, Kurla (W), Mumbai	Non Aided (Minority)	30	30
3	Thane	17	Chaitany Welfare Charitable Trust's Bhakti Vedant Hospital's Institute of Nursing, Meera Road (E), Dist. Thane	Non Aided	--	30
		18	Shirodkar Hospital Trust's Institute of Nursing Education & Paramedical Sciences, Dombivli (E), Dist. Thane	Non Aided	--	30
4	Raigad	19	ITM Trust, Chembur Mumbai's ITM Institute of Health Science, College of Nursing, New Panvel (E), Dist. Raigad	Non Aided	40	--



MAHARASHTRA UNIVERSITY OF HEALTH SCIENCES, NASHIK

5	Sindhudurga	20	Br. Nath Pai Shikshan Sanstha's Br. Nath Pai College of Nursing, Kudal, Dist. Sindhudurga	Non Aided	40	--
		21	Shri Anant Smruti Charitable Trust, A/p Kasal, Tal. Kudal, Sindhudurg's Institute of Nursing, A/p. Gaorai, Tal. Kudal, Dist. Sindhudurg	Non Aided	50	--
		22	Sindhudurg Education Society's Shri Saraswati College of Nursing A/P. Tondavali, Tal. Kankavali, Dist. Sindhudurg	Non Aided	30	--
		23	Manav Sadhan Vikas Sanstha's College of Nursing at Post. Anav, Tal. Kudal, Dist. Sindhudurga	Non Aided	--	20
Sr. No.	Districts	Sr. No.	Name of the College	Aided / Non Aided	Courses Offered	
					Basic B.Sc. Nursing	P.B.B.Sc. Nursing
					Intake	
6	Ratnagiri	24	The Yash Foundation's College of Nursing & Medical Research Institute, Mirjole, Ratnagiri	Non Aided	50	30
		25	V.J.C.T. Mumbai's Samartha Nursing College, A/p Sawarda Tal - Chiplun, Ratnagiri	Non Aided	--	20
		26	Maharashtra Education Society, Pune's M.E.S. College of Nursing, Ghanekhunt-Lote, Tal. Khed, Dist. Ratnagiri	Non Aided	40	20
7	Pune	27	Grant Medical Foundation, Ruby Hall Clinic's Tehmi Grant Institute of Nursing, Pune.	Non Aided	40	--
		28	Sinhgad Nursing College, Narhe, Pune	Non Aided	50	50
		29	College of Nursing, A.F.M.C., Pune	Central Govt.	40	20
		30	Maharshi Karve Stree Shikshan Sanstha's Smt. Bakul Tambat Institute of Nursing &, Karve Nagar, Pune	Non Aided	50	30
		31	Sadhu Vaswani Mission's Sadhu Vaswani College of Nursing, Pune	Non Aided (Minority)	50	30
		32	St. Andrews College of Nursing, 283, Shukrawarpeth, Wadia Hospi. Campus, Pune	Non Aided (Minority)	40	30
		33	Deccan Education Society's Smt. Subhadra K. Jindal College of Nursing, Shivaji Nagar, Pune	Non Aided	40	30 (Phase wise closure procedure initiated w.e.f. A. Y. 2015-16)
		34	B.J. Medical College & Sassoon General Hospital, Pune's Training College of Nursing, Pune	Govt.	50	--
35	Daund Medical Foundation's Sushrusa Institute of Nursing Sciences, Daund, Pune	Non Aided	--	20		
8	Satara	36	Bel-Air College of Nursing, Bel-Air Hospital, Panchgani, Mahabaleshwar, Dist-Satara	Non Aided	40	--
9	Sangli	37	College of Nursing, Wanless Hospital, Miraj Medical Centre, Miraj	Non Aided (Minority)	50	20
		38	Ninaidevi Shikshan Prasarak Mandal's Matoshree Hirai Deshmukh Nursing Institute, A/p Shirala, Tal. Shirala, Dist. Sangli	Non Aided	40	--
		39	Gulabrao Patil Memorial Trust's Institute of Nursing Sciences, Miraj, Dist. Sangli	Non Aided	--	30

10	Kolhapur	40	Shri Swami Vivekanand Shikshan Sanstha's Savitribai Phule College of Nursing, Kolhapur	Non Aided	50	--
		41	Shri Yashawant Shikshan Prasarak Mandal's Yashwant College of Nursing Kodoli, Tal. Panhala, Dist. Kolhapur	Non Aided	20	--
		42	Dr. J. J. Magdum Institute of Nursing Education Jaysingpur, Shirol, Kolhapur	Non Aided	--	20
11	Solapur	43	College of Nursing, Jagdale Mama Hospital, A/P, Tal – Barshi, Shivaji Nagar, Dist- Solapur	Non Aided	50	--
		44	Shivratri Shikshan Sanstha's Vijaysinh Mohite Patil College of Nursing & Medical Research Institute, Akulj Malshiras, Solapur	Non Aided	40	--
		45	Shri Sant Shiromani Namdeo Maharaj Charitable Trust's Sahara Institute of Nursing Education Bagechiwadi-Akulj, Tal. Malshiras, Dist. Solapur	Non Aided	20	30
Sr. No.	Districts	Sr. No.	Name of the College	Aided / Non Aided	Courses Offered	
					Basic B.Sc. Nursing	P.B.B.Sc. Nursing
					Intake	
12 12	Nashik	46	N.D.M.V.P Samaj's Institute of Nursing Education Vasantdada Nagar, Adgaon, Nashik	Non Aided	50	20
		47	Gokhale Education Society's Inst. of Nursing Education for B.Sc. Nursing & Training, Vidyanagar, Nashik	Non Aided	30	--
		48	Jagdamba Education Society's S.N.D. College of B.Sc. Nursing at Babhulgaon, Tal. Yeola, Nashik	Non Aided	30	--
		49	K.K. Wagh College of Nursing, Panchvati, Nashik	Non Aided	40	--
		50	Matoshri College of Nursing, Eklahare, Tal. Dist. Nashik	Non Aided	30	--
		51	Sukhdeo Mahipat Morey-Patil Pratishthan's SMMPP's Ganpatrao Adke College of Nursing, At/po. Dugaon, Dist. Nashik	Non Aided	--	30
		52	Namco Charitable Trust's Namco College of Nursing, Panchavati, Dist. Nashik	Non Aided	--	20
		53	Nashik Nursing College Market Yard, Dindori Road, Panchvati, Nashik	Non Aided	--	30
13	Dhule	54	JMF's A.C.P.M. College of Nursing, Dhule	Non Aided	50	--
14	Ah'nagar	55	Dr. V.V.Patil Foundation's College of Nursing Nursing, Dr.V. Patil Memorial Hosp. & Medical College, Vilad Ghat, A'nagar	Non Aided	50	30
		56	Shiva Trust, Supriyadi Sule College of Nursing, Shrirampur, Ahmednagar	Non Aided	40	30
		57	Ratnadeep Medical Foundation's Shri Sai Nursing College at Jamkhed (Ratnapur), Tal. Jamkhed, Dist. Ahmednagar	Non Aided	40	--
		58	St. Luke's Hospital College of Nursing, Shrirampur, Ahmednagar	Non Aided	--	30
15	Jalgaon	59	Godavari Foundation's Nursing Nursing College, Khirdi Shivar, Jalgaon	Non Aided	50	40
16	Nandurbar	60	K.D. Gavit Nursing College Natawad, Nandurbar	Non Aided	40	--
Total					2010	870
					2880	



MAHARASHTRA UNIVERSITY OF HEALTH SCIENCES, NASHIK

Marathwada						
17	Aurangabad	61	Ramchandra Undangawkar Maharaj, Washim's Swatantra Senani Uttamraoji Patil College, Samarth Nagar, Near Ashwin Hospital, Cidco, A'bad	Non Aided	50	30
		62	Shiva Trust A'bad's Aurangabad Training college of Nursing, Shivaji Nagar, Bhalgaon, A'bad	Non Aided	40	20
		63	MGM Trust, Nanded's Mother Teresa College of Nursing, Aurangabad	Non Aided	50	40
		64	Gramodhyogik Shikshan Mandal's MIT Nursing College, Cidco, Aurangabad	Non Aided	40	--
		65	Govt. Medical College & Hospital's College of Nursing, Aurangabad	Govt.	50	--
		66	Marathwada Medical and Research Institute, A'bad's Kamalnayan Bajaj Nursing College, A'bad	Non Aided	50	30
		67	Oyster College of Nursing Mouza-Golatgaon, Naginchiwadi, Jalna Road, Aurangabad	Non Aided	40	--
		68	Dr. Babasaheb Ambedkar Vaidyakiya Pratishthan's Dr. Hegdewar College of Nursing, Garkheda, Aurangabad	Non Aided	50	--
		69	Anand Charitable Trust's Anand College of Nursing Phulewadi Road, Vaijapur, Aurangabad	Non Aided	50	--
18	Nanded	70	Sahyog Sevabhavi Sanstha, Dist. Nanded's Mother Teresa Nursing School at Nanded	Non Aided	40	--
19	Latur	71	Maharashtra Institute of Nursing Sciences Vishwanathpuram, Latur	Non Aided	50	--
		72	Maharashtra College of Nursing C/o Swami Vivvkananda Entigretion English School, MIDC, Dist. Latur	Non Aided	40	--
		73	Swami Vivekanand College of Nursing Udgir, Latur	Non Aided	40	--
		74	Adarsh Bahuuddeshiya Sevabhavi Sanstha's Late Ramrao Patil Nursing College, Harkare Nagar, Tal. Udgir, Dist. Latur	Non Aided	20	--
20	Beed	75	Aditya Education Trust's Aditya Nursing College, Beed	Non Aided	40	--
		76	Shri. Tirupati Bahuuddeshiya Sevabhavi Sanstha's Shri. Swami Vivekanand College of Nursing, Anand Nagar, Canal Road, Dist. Beed	Non Aided	--	20
		77	Vaidyanath Sarvangin Vikas Prathishthan's Vaidyanath Institute of Nursing Vidyanager, Parali-Vaijanath, Dist. Beed	Non-Aided	--	20
21	Parbhani	78	Shri. Beleshwar Shikshan Prasarak Mandal's Beleshwar Institute of Nursing, Parbhani	Non Aided	40	--
22	Osmanabad	79	Adarsh Shikshan Prasarak Mandal's K.T. Patil College of Nursing, Osmanabad	Non Aided	40	--
		80	Yashodeep Bahuuddeshiya Samajik Va Shaikshanik Sanshta's Dr. Shivajirao Ghogre Institute of Nursing, Samata Nagar, Dist. Osmanabad	Non Aided	--	30
23	Jalna	81	Vsantrao Naik College of Nursing, Old Jalna, Dist. Jalna	Non Aided	40	--

Vidarbha						
24	Nagpur	82	V.S.P.M's College of Nursing & Research Centre, Digdoh Hills, Hingna Rd, Nagpur	Non Aided	50	20
		83	B.Sc. Nursing, Govt. Medical College & Hospital, Ajni, Nagpur	Govt.	50	--
		84	Maharshi Karve Stree Shikshan Sanstha, Karvenagar, Pune's Nursing College, Deo Nagar, Nagpur	Non Aided	50	--
		85	Dnyanpath Bahu-uddeshiya Shikshan Prasarak Mandal's Suretech College of Nursing, Jamtha, Tal. Dist. Nagpur	Non Aided	40	--
		86	Manakchand Prabhudan Charitable Trust's Asharam College of Nursing, Kamptee, Nagpur	Non Aided	40	--
		87	Indian Youth Welfare Multipurpose Society's Sumantai Wasnik College of Nursing Shivpriya Nagar, Dabha, Kha No. 142/1, Nagpur	Non Aided	40	--
		88	MKSSS Pune's Sitabai Nargudkar College of Nursing for Women, Mouje Sukli (Gupchup), Tal. Hingana, Dist. Nagpur	Non Aided	--	20
25	Bhandara	89	Bhondekar Sanskrutik Krida Va Samajik Shikshan Sanstha's Puja Nursing College, Bhandara	Non Aided	30	--
26	Wardha	90	Kasturba Health Society's Kasturba Nursing College, Sewagram, Tal. & Dist. Wardha	Non Aided	40	20
27	Gadchiroli	91	Ayurved Utkarsh Mandal, Nagpur's Dr. Salve College of Nursing, Chatgaon, Tal. Dhanora, Dist. Gadchiroli	Non Aided	40	--
28	Chandrapur	92	Jeevan Jyoti Pratisthan's Late Dr. Sau Vasudha Zade Nursing College, in front of Adarsh Petrol Pump, Mul Road, Sarkar Nagar, Chandrapur	Non Aided	40	--
29	Amravati	93	Shri. Shivaji Education Society's Dr. Panjabrao Deshmukh Nursing, Institute, Shivaji Nagar, Amravati	Non Aided	50	30
30	Akola	94	Kai Ramchandra Udangaonkar Maharaj Washim's Late Pandurang Patil Nursing College, At/po. Kanheri (Sarap), Tal. Barshitakli, Dist. Akola	Non Aided	40	--
		95	Shri Samarth Shikshan Va Krida Prasarak Mandal's Samarth Nursing College, Akola	Non Aided	30	--
		96	Maharshi Walmiki College of Nursing, Malkapur, Akola	Non Aided	--	20
31	Yavatmal	97	Navasanjeevan Shikshan Prasarak Mandal's Smt. Sumitrabai Thakare Training College of Nursing, Darwaha Road, Yavatmal, Dist. Yavatmal	Non Aided	40	--
32	Washim	98	Reynolds Memorial Hospital & Affiliated Clinics's Nazarene Nurses (Nursing) Training College, Pusad Road, Washim	Non Aided	40	--
33	Buldhana	99	Indira Bahu-Uddeshiya Shikshan Sanstha's College of Nursing, Juna Ajispur Road, Rajendra Nagar, Sagawan Buldhana, Tal. & Dist. Buldhana	Non Aided	40	--
		100	Paramhansa Ramkrishna Maunibaba Shikshan Sanstha's Anuradha College of Nursing, Chikhli, Dist. Buldhana	Non Aided	30	--
Total					690	110
					800	
GRAND TOTAL					3470	1170
B.Sc. Nursing & P.B.B.Sc.Nursing GRAND TOTAL					4640	



Table No. - 07

Physiotherapy

Sr. No.	Districts	Sr. No.	Name of the College	Aided / Non Aided	Intake
Rest of Maharashtra					
Sr. No.	Districts	Sr. No.	Name of the College	Aided / Non Aided	Intake
Rest of Maharashtra					
1	Mumbai	1	Physi. Teaching and Treatment Centre, Lokmanya Tilak Municipal Medical College, Sion, Mumbai	Corp.	10
		2	College of Physiotherapy, Seth. G.S. Medical Hospital, College, Parel, Mumbai	Corp.	40
		3	College of Physiotherapy, T.N. Medical College, Mumbai	Corp.	10
		4	K. J. Somaiya College of Physiotherapy, Sion, Mumbai.	Non Aided	40
	Navi Mumbai	5	MGM's College of Physiotherapy, Kamothe, Navi Mumbai.	Non Aided	30
		6	Terna Charitable Trust's College of Physiotherapy, Nerul (W) Navi Mumbai	Non Aided	40
2	Thane	7	Deep Paramedical Organisation's Nett College of Physi., Owala, P.O. Kasarvadavli, Thane	Non Aided	40
3	Pune	8	CMF's College of Physiotherapy, Nigadi, Pune	Non Aided	40
		9	Sancheti Orthopedic Research Institute, Shivaji Nagar, Pune	Non Aided	60
		10	Maharashtra Medical Education & Research Centre's M.A. Rangoonwala College of Phys., Pune	Non Aided	30
		11	MAEER's Physiotherapy College, Talegaon Dabhade, Pune	Non Aided	40
		12	P.E. Society's Modern College of Physi, Shivaji Nagar, Pune	Non Aided	50
		13	Bansilal Ramnath Agarwal Charitable trust's Vishwakarma Institute & Research, College of Physi., Pune	Non Aided	30
		14	Deccan Edu. Society's Subhdrai Jindal College of Physio., Pune	Non Aided	30
		15	Smt. Kashibai Navale College of Physiotherapy, off westerly by Pass, Narhe (Ambegaon), Pune	Non-Aided	20
16	Lokmanya Medical Foundation and Research Centre's Kranti Mahavidyalaya, Sector Noo. 25, Sindhunagar, nigadi, Pune	Non-Aided	30		
4	Kolhapur	17	D.Y. Patil College of Physiotherapy Therapy, Kolhapur	Non Aided	10
5	Sangli	18	Miraj Medical Centre, College of Physiotherapy Miraj, Dist. Sangli	Non Aided	50
6	Nashik	19	NDMVPS's College of Physiotherapy, Adgaon, Nashik.	Non Aided	30
7	Dhule	20	JMF's, A.C.P.M. College of Physiotherapy, Dhule	Non Aided	30
8	Ahmednagar	21	College of Physiotherapy, Dr. Vikhe Patil Memorial Hospital & Medical College, Vilad Ghat, A' nagar	Non Aided	40
		22	Siddhakala College of Physiotherapy, Sangamner, A'nagar	Non Aided	30
9	Jalgaon	23	Dr. Ulhas Patil College of Physiotherapy, Jalgaon	Non Aided	30
10	Nandurbar	24	Adiwasi Deomogra Edu. Society's K.D. Gavit Physio. College, Pathrai Site, Tal. Dist. Nandurbar	Non Aided	30
Total					790
Marathwada					
11	Aurangabad	25	MGM's College of Physiotherapy, Cidco, Aurangabad	Non Aided	30
		26	Shri. Bhagwan College of Physi, Dr. Y.S. Khedkar Marg, N-6, CIDCO, A'bad	Non Aided	25
12	Nanded	27	Shri. Gurudatta Pratishthan's Nanded Physiotherapy College & Research Centre, Pangri Village, Tal. & Dist. Nanded	Non Aided	40
13	Beed	28	Akshay Seva Pratishthan Sherya Hospital Beed's College of Physiotherapy Kaij, Dist. Beed	Non Aided	40
14	Latur	29	Maharashtra Institute of Physiotherapy College, Vishwanathpuram, Ambajogai Road Latur	Non Aided	30
Total					165

Vidarbha					
15	Nagpur	30	VSPM College of Physiotherapy, Nagpur	Non Aided	50
		31	P.T. School and Centre, Govt. Medical College, Ajni, Nagpur	Govt.	30
		32	Lok Dnyan Prasarak Sanstha, Chandrapur's Niharika College of Physiotherapy, Isasani, Tal. Hingana, Dist. Nagpur	Non Aided	50
Total					130
GRAND TOTAL					1085

Table No. - 08

Occupational Therapy

Sr. No.	Districts	Sr. No.	Name of the College	Aided / Non Aided	Intake
Rest of Maharashtra					
1	Mumbai	1	Occupational Therapy School & Centre, Lokmanya Tilak Municipal Medical College, Sion, Mumbai	Corp.	10
		2	Dept of Occupational Therapy, Seth G.S.M.C, Parel, Mumbai	Corp.	40
		3	Dept of Occupational Therapy, T.N.M.C., Mumbai	Corp.	10
	Navi Mumbai	4	Dr. D.Y. Patil College of Occupational Therapy, Nerul, Mumbai	Non Aided	30
2	Kolhapur	5	D.Y. Patil College of Occupational Therapy, Kolhapur	Non Aided	10
Total					100
Vidarbha					
3	Nagpur	6	Dept. of Occupational Therapy, Govt. Medical College, Ajni, Nagpur	Govt.	30
GRAND TOTAL					130

Table No. - 09

BASLP

Sr. No.	Districts	Sr. No.	Name of the College	Aided / Non Aided	Intake
Rest of Maharashtra					
1	Mumbai	1	Ali Yavar Jung National Institute of the Hearing Handicapped, Bandra (W), Mumbai	Govt.	43
		2	Audiology & Speech Therapy School, TNMC, Mumbai Centra, Mumbai	Corp.	10
	Pune	3	Ayodhya Charitable Trust's College of Audiology & Speech Language Pathology, Wanwadi, Pune	Non Aided (Phase wise closure procedure initiated w.e.f. A. Y. 2012-13)	--
Total					53
Marathwada					
2	Aurangabad	4	Bhagwan Shikshan Prasarak Mandal, Aurangabad's Dr. Y.S. Khedkar College of B.A.S.L.P., Aurangabad	Non Aided	20
Vidarbha					
3	Nagpur	5	Late B.N. Saoji Academy (Society), Nagpur's Pratkan College of Audiology and Speech Language Pathology (B.A.S.L.P), Butibori, Nagpur	Non Aided	20
Grand Total					93

Table No. - 10

Prosthetics & Orthotics

Sr. No.	Districts	Sr. No.	Name of the College	Aided / Non Aided	Intake
Rest of Maharashtra					
1	Mumbai	1	All India Institute of Medicine & Rehabilitation, Haji Ali Park, Mahalaxmi, Mumbai	Govt.	30
Grand Total					30
No of Colleges					326
UNIVERSITY TOTAL STUDENT'S INTAKE CAPACITY					21033

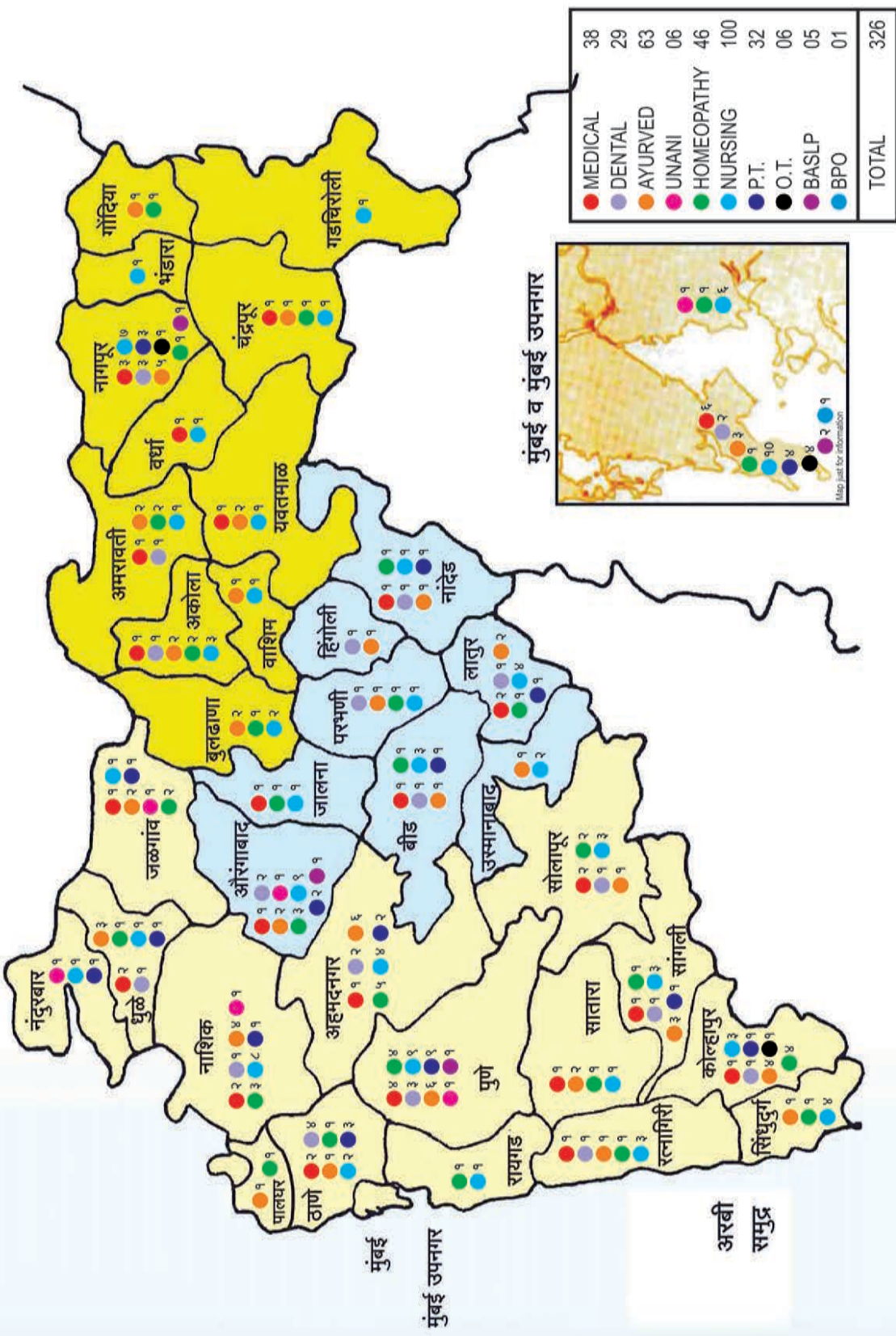


MAHARASHTRA UNIVERSITY OF HEALTH SCIENCES, NASHIK

Table No. - 11

Number of Health Sciences colleges in the various states of India												
Sr. No.	State	Medical	Dental	Ayurved	Unani	Homoeopathy	Physiotherapy	Occupational Therapy	(B.Sc. & P.B.B.Sc.)	BASLP	BPO	Total
1	Andhra Pradesh	30	18	07	02	04	--	--	254	06	--	321
2	Assam	03	01	01	--	03	--	--	09	--	--	17
3	Arunachal Pradesh	--	--	--	--	01	--	--	--	--	--	01
4	Bihar	08	07	11	04	12	--	--	02	02	01	47
5	Chhattisgarh	03	06	03	01	03	--	--	56	01	01	74
6	Gujarat	13	11	12	--	16	--	--	41	01	01	95
7	Goa	01	01	01	--	01	--	--	04	--	--	08
8	Haryana	03	10	09	--	01	--	--	31	--	--	54
9	Himachal Pradesh	02	05	01	--	02	--	--	10	--	--	20
10	Jammu & Kashmir	04	03	01	02	--	--	--	07	--	--	17
11	Jharkhand	03	03	01	--	02	--	--	06	--	--	15
12	Karnataka	39	46	77	06	13	--	--	361	13	01	556
13	Kerala	18	23	18	--	05	--	--	172	05	--	241
14	Madhya Pradesh	09	14	21	04	18	--	--	138	01	--	205
15	Maharashtra	48	38	66	06	47	37	06	113	06	02	369
16	Manipur	01	--	--	--	--	--	--	04	--	--	05
17	Meghalaya	--	--	--	--	--	--	--	02	--	--	02
18	Mizoram	--	--	--	--	--	--	--	02	--	--	02
19	Nagaland	--	--	--	--	--	--	--	--	--	--	--
20	Orissa	06	05	06	--	06	--	--	15	02	02	42
21	Punjab	08	14	13	--	05	--	--	152	--	--	192
22	Rajasthan	08	13	10	02	06	--	--	188	01	--	228
23	Sikkim	01	--	--	--	--	--	--	03	--	--	04
24	Tamil Nadu	25	28	08	01	09	--	--	207	06	--	284
25	Tripura	02	--	--	--	--	--	--	02	--	--	04
26	Telangana	12	07	06	01	03	--	--	--	--	--	29
27	Uttar Pradesh	16	30	20	12	09	--	--	46	--	--	133
28	Uttaranchal	03	02	05	--	01	--	--	13	01	--	25
29	West Bengal	09	05	03	01	13	--	--	24	01	01	57
30	Andaman & Nicobar	--	--	--	--	--	--	--	--	--	--	--
31	Chandigarh	01	01	01	--	01	--	--	02	01	--	07
32	Dadar & Nagar Haveli	--	--	--	--	--	--	--	--	--	--	--
33	Delhi	05	03	02	02	02	--	--	12	02	02	30
34	Lakshadweep	--	--	--	--	--	--	--	--	--	--	--
35	Pondicherry	08	03	01	--	--	--	--	17	01	--	30
36	Deev & Daman	--	01	--	--	--	--	--	--	--	--	01
Total		289	298	304	44	183	37	06	1893	50	11	3115
Source : Website of respective councils.												
There is no national council for Physiotherapy and Occupational Therapy.												

महाराष्ट्र आरोग्य विज्ञान विद्यापीठ, नाशिक (संलग्नित महाविद्यालये)



नकाशातील महाविद्यालयांची संख्या दि.३०।०६।२०१६ ची स्थिती दर्शविणारी आहे.

विद्यापीठ गीत

नमस्कार! नमस्कार!! नमस्कार!!!
आरोग्याच्या विज्ञानाच्या विद्यापीठा नमस्कार।।

विज्ञानाची विशुद्ध निष्ठा,
संशोधन ही ज्ञानप्रतिष्ठा,
जादू नाही, किमया नाही, नाही फसवा चमत्कार,
आरोग्याच्या विज्ञानाच्या विद्यापीठा नमस्कार।।

अनेक शाखा विज्ञानाच्या
वृक्षावर विद्यापीठाच्या
करुणेचा सेवेचा येथे विज्ञानाला साक्षात्कार,
आरोग्याच्या विज्ञानाच्या विद्यापीठा नमस्कार।।

आरोग्याचे हे संरक्षण
म्हणजे मानवतेचे रक्षण,
मानव होवो सुखी-निरोगी हाच आमुच मंत्रोच्चार,
आरोग्याच्या विज्ञानाच्या विद्यापीठा नमस्कार।।

- कविवर्य मंगेश पाडगांवकर



Maharashtra University of Health Sciences, Nashik

Mhasrul, Vani-Dindori Road, Nashik-422 004.
Ph.:0253- 2539244, 2539241 | Fax: 0253 - 2539242
Website:<http://www.muhs.ac.in>
email: planning@muhs.ac.in